



# Arp3 rabbit pAb

Cat No.:ES1707

For research use only

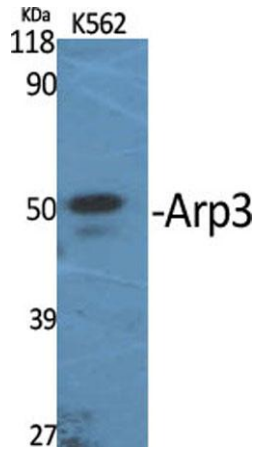
## Overview

<b>Product Name</b>	Arp3 rabbit pAb
<b>Host species</b>	Rabbit
<b>Applications</b>	WB;ELISA
<b>Species Cross-Reactivity</b>	Human;Mouse;Rat
<b>Recommended dilutions</b>	Western Blot: 1/500 - 1/2000. ELISA: 1/40000. Not yet tested in other applications.
<b>Immunogen</b>	The antiserum was produced against synthesized peptide derived from human ACTR3. AA range:369-418
<b>Specificity</b>	Arp3 Polyclonal Antibody detects endogenous levels of Arp3 protein.
<b>Formulation</b>	Liquid in PBS containing 50% glycerol, 0.5% BSA and 0.02% sodium azide.
<b>Storage</b>	Store at -20°C. Avoid repeated freeze-thaw cycles.
<b>Protein Name</b>	Actin-related protein 3
<b>Gene Name</b>	ACTR3
<b>Cellular localization</b>	Cytoplasm, cytoskeleton . Cell projection . Nucleus . In pre-apoptotic cells, colocalizes with MEFV in large specks (pyroptosomes) (PubMed:19109554).
<b>Purification</b>	The antibody was affinity-purified from rabbit antiserum by affinity-chromatography using epitope-specific immunogen.
<b>Clonality</b>	Polyclonal
<b>Concentration</b>	1 mg/ml
<b>Observed band</b>	47kD
<b>Human Gene ID</b>	10096
<b>Human Swiss-Prot Number</b>	P61158
<b>Alternative Names</b>	ACTR3; ARP3; Actin-related protein 3; Actin-like protein 3
<b>Background</b>	The specific function of this gene has not yet been determined; however, the protein it encodes is known to be a major constituent of the ARP2/3 complex. This complex is located at the cell surface

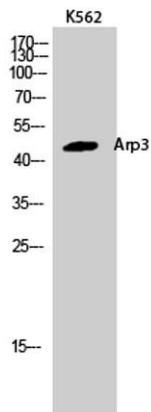




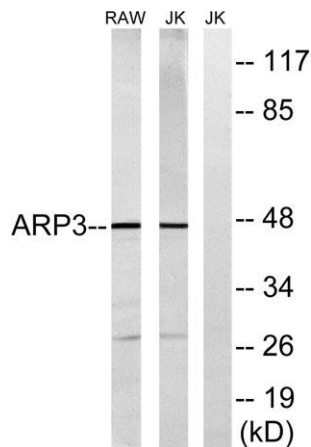
and is essential to cell shape and motility through lamellipodial actin assembly and protrusion. Three transcript variants encoding two different isoforms have been found for this gene. [provided by RefSeq, Mar 2013],



Western Blot analysis of various cells using Arp3 Polyclonal Antibody



Western Blot analysis of K562 cells using Arp3 Polyclonal Antibody

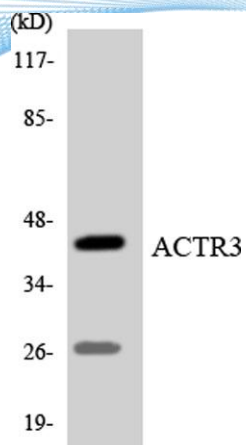


Western blot analysis of lysates from Jurkat and RAW264.7 cells, using ACTR3 Antibody. The lane on the right is blocked with the synthesized peptide.





**ELK Biotechnology**



Western blot analysis of the lysates from COLO205 cells using ACTR3 antibody.



+86-27-59760950

[ELKbio@ELKbiotech.com](mailto:ELKbio@ELKbiotech.com)

[www.elkbiotech.com](http://www.elkbiotech.com)

23-2, No.388 Gaoxin 2nd Road,Wuhan East Lake Hi-tech Development Zone, Hubei , P.R.C