



# ARMC6 rabbit pAb

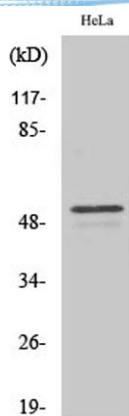
Cat No.:ES1703

For research use only

## Overview

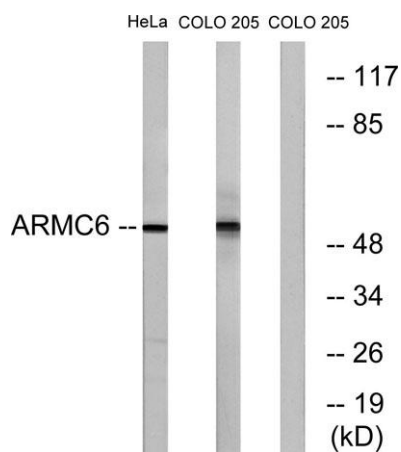
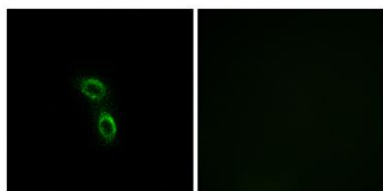
<b>Product Name</b>	ARMC6 rabbit pAb
<b>Host species</b>	Rabbit
<b>Applications</b>	WB;IF;ELISA
<b>Species Cross-Reactivity</b>	Human;Mouse;Rat
<b>Recommended dilutions</b>	Western Blot: 1/500 - 1/2000. Immunofluorescence: 1/200 - 1/1000. ELISA: 1/40000. Not yet tested in other applications.
<b>Immunogen</b>	The antiserum was produced against synthesized peptide derived from human ARMC6. AA range:431-480
<b>Specificity</b>	ARMC6 Polyclonal Antibody detects endogenous levels of ARMC6 protein.
<b>Formulation</b>	Liquid in PBS containing 50% glycerol, 0.5% BSA and 0.02% sodium azide.
<b>Storage</b>	Store at -20°C. Avoid repeated freeze-thaw cycles.
<b>Protein Name</b>	Armadillo repeat-containing protein 6
<b>Gene Name</b>	ARMC6
<b>Cellular localization</b>	
<b>Purification</b>	The antibody was affinity-purified from rabbit antiserum by affinity-chromatography using epitope-specific immunogen.
<b>Clonality</b>	Polyclonal
<b>Concentration</b>	1 mg/ml
<b>Observed band</b>	54kD
<b>Human Gene ID</b>	93436
<b>Human Swiss-Prot Number</b>	Q6NXE6
<b>Alternative Names</b>	ARMC6; Armadillo repeat-containing protein 6
<b>Background</b>	The function of this gene's protein product has not been determined. A related protein in mouse suggests that this protein has a conserved function. Two transcript variants encoding different isoforms have been found for this gene. [provided by RefSeq, Nov 2010],





Western Blot analysis of various cells using ARMC6 Polyclonal Antibody

Immunofluorescence analysis of A549 cells, using ARMC6 Antibody. The picture on the right is blocked with the synthesized peptide.



Western blot analysis of lysates from HeLa and COLO cells, using ARMC6 Antibody. The lane on the right is blocked with the synthesized peptide.

