

ARHGAP18 rabbit pAb

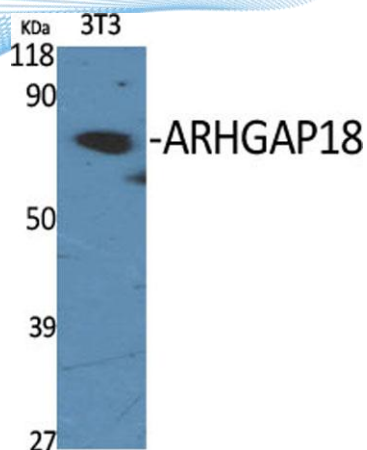
Cat No.:ES1696

For research use only

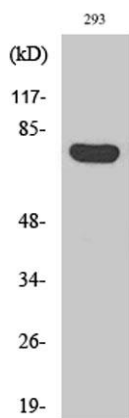
Overview

Product Name	ARHGAP18 rabbit pAb
Host species	Rabbit
Applications	WB;IHC;IF;ELISA
Species Cross-Reactivity	Human;Rat;Mouse;
Recommended dilutions	Western Blot: 1/500 - 1/2000. Immunohistochemistry: 1/100 - 1/300. ELISA: 1/40000. Not yet tested in other applications.
Immunogen	The antiserum was produced against synthesized peptide derived from human RHG18. AA range:517-566
Specificity	ARHGAP18 Polyclonal Antibody detects endogenous levels of ARHGAP18 protein.
Formulation	Liquid in PBS containing 50% glycerol, 0.5% BSA and 0.02% sodium azide.
Storage	Store at -20°C. Avoid repeated freeze-thaw cycles.
Protein Name	Rho GTPase-activating protein 18
Gene Name	ARHGAP18
Cellular localization	Cytoplasm .
Purification	The antibody was affinity-purified from rabbit antiserum by affinity-chromatography using epitope-specific immunogen.
Clonality	Polyclonal
Concentration	1 mg/ml
Observed band	75kD
Human Gene ID	93663
Human Swiss-Prot Number	Q8N392
Alternative Names	ARHGAP18; Rho GTPase-activating protein 18; MacGAP; Rho-type GTPase-activating protein 18
Background	ARHGAP18 belongs to a family of Rho (see MIM 165390) GTPase-activating proteins that modulate cell signaling (Potkin et al., 2009 [PubMed 19065146]).[supplied by OMIM, Apr 2010],

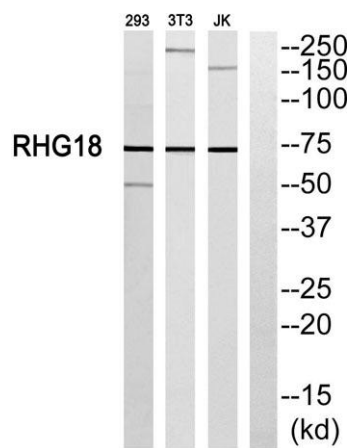




Western Blot analysis of various cells using ARHGAP18 Polyclonal Antibody



Western Blot analysis of Jurkat cells using ARHGAP18 Polyclonal Antibody



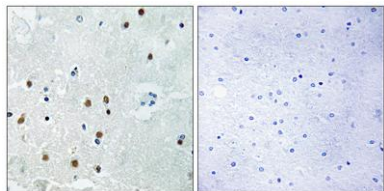
Western blot analysis of RHG18 Antibody. The lane on the right is blocked with the RHG18 peptide.





ELK Biotechnology

Immunohistochemistry analysis of paraffin-embedded human brain, using RHG18 Antibody. The lane on the right is blocked with the RHG18 peptide.



+86-27-59760950

ELKbio@ELKbiotech.com

www.elkbiotech.com

23-2, No.388 Gaoxin 2nd Road,Wuhan East Lake Hi-tech Development Zone, Hubei , P.R.C