



# ARALAR rabbit pAb

Cat No.:ES1694

For research use only

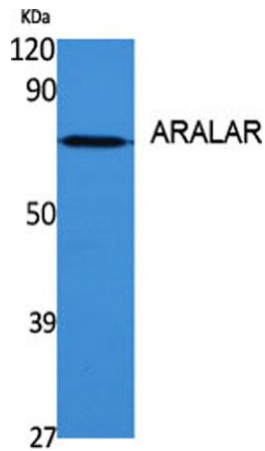
## Overview

<b>Product Name</b>	ARALAR rabbit pAb
<b>Host species</b>	Rabbit
<b>Applications</b>	WB;IHC;IF;ELISA
<b>Species Cross-Reactivity</b>	Human;Rat;Mouse;
<b>Recommended dilutions</b>	Western Blot: 1/500 - 1/2000. Immunohistochemistry: 1/100 - 1/300. ELISA: 1/20000. Not yet tested in other applications.
<b>Immunogen</b>	The antiserum was produced against synthesized peptide derived from human CMC1. AA range:391-440
<b>Specificity</b>	ARALAR Polyclonal Antibody detects endogenous levels of ARALAR protein.
<b>Formulation</b>	Liquid in PBS containing 50% glycerol, 0.5% BSA and 0.02% sodium azide.
<b>Storage</b>	Store at -20°C. Avoid repeated freeze-thaw cycles.
<b>Protein Name</b>	Calcium-binding mitochondrial carrier protein Aralar1
<b>Gene Name</b>	SLC25A12
<b>Cellular localization</b>	Mitochondrion inner membrane ; Multi-pass membrane protein .
<b>Purification</b>	The antibody was affinity-purified from rabbit antiserum by affinity-chromatography using epitope-specific immunogen.
<b>Clonality</b>	Polyclonal
<b>Concentration</b>	1 mg/ml
<b>Observed band</b>	75kD
<b>Human Gene ID</b>	8604
<b>Human Swiss-Prot Number</b>	O75746
<b>Alternative Names</b>	SLC25A12; ARALAR1; Calcium-binding mitochondrial carrier protein Aralar1; Mitochondrial aspartate glutamate carrier 1; Solute carrier family 25 member 12
<b>Background</b>	This gene encodes a calcium-binding mitochondrial

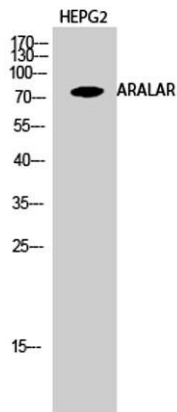




carrier protein. The encoded protein localizes to the mitochondria and is involved in the exchange of aspartate for glutamate across the inner mitochondrial membrane. Polymorphisms in this gene may be associated with autism, and mutations in this gene may also be a cause of global cerebral hypomyelination. Alternatively spliced transcript variants have been observed for this gene. [provided by RefSeq, Apr 2012],

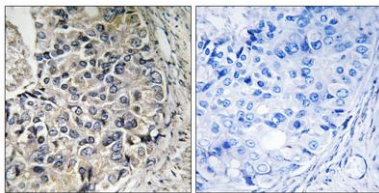


Western Blot analysis of various cells using ARALAR Polyclonal Antibody diluted at 1:1000



Western Blot analysis of HEPG2 cells using ARALAR Polyclonal Antibody diluted at 1:1000

Immunohistochemistry analysis of paraffin-embedded human prostate carcinoma tissue, using CMC1 Antibody. The picture on the right is blocked with the synthesized peptide.





**ELK Biotechnology**



+86-27-59760950

[ELKbio@ELKbiotech.com](mailto:ELKbio@ELKbiotech.com)

[www.elkbiotech.com](http://www.elkbiotech.com)

23-2, No.388 Gaoxin 2nd Road,Wuhan East Lake Hi-tech Development Zone, Hubei , P.R.C