



AQP5 rabbit pAb

Cat No.:ES1690

For research use only

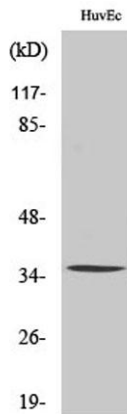
Overview

Product Name	AQP5 rabbit pAb
Host species	Rabbit
Applications	WB;IHC;IF;ELISA
Species Cross-Reactivity	Human;Rat;Mouse;
Recommended dilutions	Western Blot: 1/500 - 1/2000. Immunohistochemistry: 1/100 - 1/300. ELISA: 1/40000. Not yet tested in other applications.
Immunogen	The antiserum was produced against synthesized peptide derived from human AQP5. AA range:194-243
Specificity	AQP5 Polyclonal Antibody detects endogenous levels of AQP5 protein.
Formulation	Liquid in PBS containing 50% glycerol, 0.5% BSA and 0.02% sodium azide.
Storage	Store at -20°C. Avoid repeated freeze-thaw cycles.
Protein Name	Aquaporin-5
Gene Name	AQP5
Cellular localization	Apical cell membrane ; Multi-pass membrane protein . Cell membrane ; Multi-pass membrane protein . Cytoplasmic vesicle membrane ; Multi-pass membrane protein . Hypotonicity increases location at the cell membrane. Phosphorylation decreases location at the
Purification	The antibody was affinity-purified from rabbit antiserum by affinity-chromatography using epitope-specific immunogen.
Clonality	Polyclonal
Concentration	1 mg/ml
Observed band	35kD
Human Gene ID	362
Human Swiss-Prot Number	P55064
Alternative Names	AQP5; Aquaporin-5; AQP-5
Background	Aquaporin 5 (AQP5) is a water channel protein.



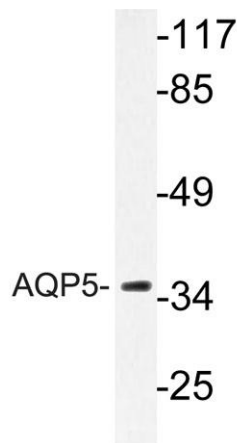
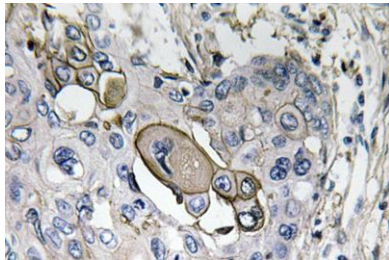


Aquaporins are a family of small integral membrane proteins related to the major intrinsic protein (MIP or AQP0). Aquaporin 5 plays a role in the generation of saliva, tears and pulmonary secretions. AQP0, AQP2, AQP5, and AQP6 are closely related and all map to 12q13. [provided by RefSeq, Jul 2008],



Western Blot analysis of various cells using AQP5 Polyclonal Antibody

Immunohistochemistry analysis of AQP5 antibody in paraffin-embedded human lung carcinoma tissue.



Western blot analysis of lysate from HUVEC cells, using AQP5 antibody.

