



# AQP12 rabbit pAb

Cat No.:ES1687

For research use only

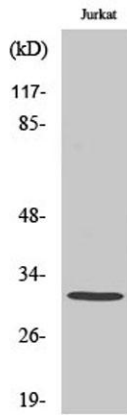
## Overview

<b>Product Name</b>	AQP12 rabbit pAb
<b>Host species</b>	Rabbit
<b>Applications</b>	WB;ELISA
<b>Species Cross-Reactivity</b>	Human;Rat;Mouse;
<b>Recommended dilutions</b>	Western Blot: 1/500 - 1/2000. ELISA: 1/40000. Not yet tested in other applications.
<b>Immunogen</b>	The antiserum was produced against synthesized peptide derived from human AQP12. AA range:231-280
<b>Specificity</b>	AQP12 Polyclonal Antibody detects endogenous levels of AQP12 protein.
<b>Formulation</b>	Liquid in PBS containing 50% glycerol, 0.5% BSA and 0.02% sodium azide.
<b>Storage</b>	Store at -20°C. Avoid repeated freeze-thaw cycles.
<b>Protein Name</b>	Aquaporin-12A/B
<b>Gene Name</b>	AQP12A/AQP12B
<b>Cellular localization</b>	Membrane ; Multi-pass membrane protein .
<b>Purification</b>	The antibody was affinity-purified from rabbit antiserum by affinity-chromatography using epitope-specific immunogen.
<b>Clonality</b>	Polyclonal
<b>Concentration</b>	1 mg/ml
<b>Observed band</b>	34kD
<b>Human Gene ID</b>	375318/653437
<b>Human Swiss-Prot Number</b>	Q8IXF9/A6NM10
<b>Alternative Names</b>	AQP12A; AQP12; AQPX2; Aquaporin-12A; AQP-12; AQP12B; Aquaporin-12B; AQP-12B
<b>Background</b>	domain:Aquaporins contain two tandem repeats each containing three membrane-spanning domains and a pore-forming loop with the signature motif Asn-Pro-Ala (NPA).,function:Aquaporins facilitate the transport of water and small neutral solutes across cell membranes.,similarity:Belongs to the

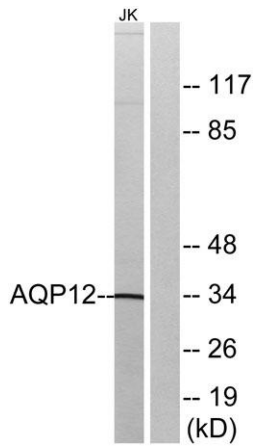




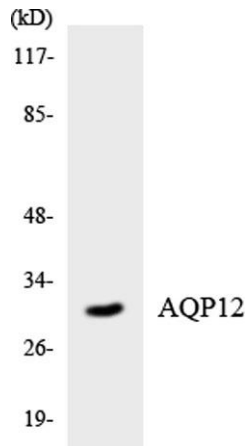
MIP/aquaporin (TC 1.A.8) family. AQP11/AQP12 subfamily.,tissue specificity:Restricted to the pancreas.,



Western Blot analysis of various cells using AQP12 Polyclonal Antibody diluted at 1:1000



Western blot analysis of lysates from Jurkat cells, using AQP12 Antibody. The lane on the right is blocked with the synthesized peptide.



Western blot analysis of the lysates from HUVECcells using AQP12 antibody.

