



ApoF rabbit pAb

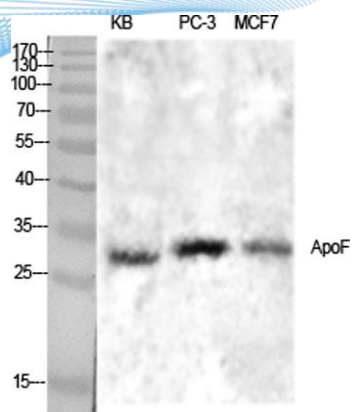
Cat No.:ES1681

For research use only

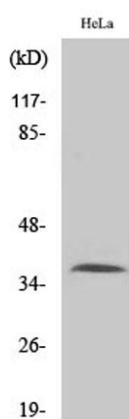
Overview

Product Name	ApoF rabbit pAb
Host species	Rabbit
Applications	WB;ELISA
Species Cross-Reactivity	Human;Rat;Mouse;
Recommended dilutions	Western Blot: 1/500 - 1/2000. ELISA: 1/40000. Not yet tested in other applications.
Immunogen	The antiserum was produced against synthesized peptide derived from human APOF. AA range:221-270
Specificity	ApoF Polyclonal Antibody detects endogenous levels of ApoF protein.
Formulation	Liquid in PBS containing 50% glycerol, 0.5% BSA and 0.02% sodium azide.
Storage	Store at -20°C. Avoid repeated freeze-thaw cycles.
Protein Name	Apolipoprotein F
Gene Name	APOF
Cellular localization	Secreted .
Purification	The antibody was affinity-purified from rabbit antiserum by affinity-chromatography using epitope-specific immunogen.
Clonality	Polyclonal
Concentration	1 mg/ml
Observed band	38kD
Human Gene ID	319
Human Swiss-Prot Number	Q13790
Alternative Names	APOF; Apolipoprotein F; Apo-F; Lipid transfer inhibitor protein; LTIP
Background	The product of this gene is one of the minor apolipoproteins found in plasma. This protein forms complexes with lipoproteins and may be involved in transport and/or esterification of cholesterol. [provided by RefSeq, Jul 2008],

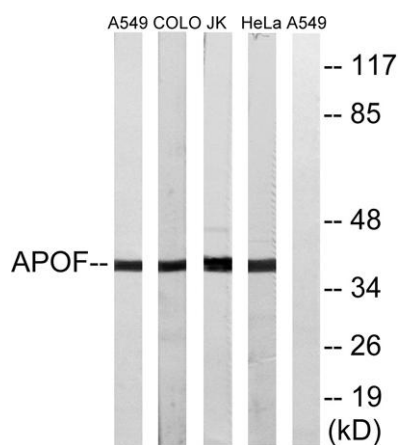




Western Blot analysis of various cells using ApoF Polyclonal Antibody diluted at 1:1000



Western Blot analysis of A549 cells using ApoF Polyclonal Antibody diluted at 1:1000

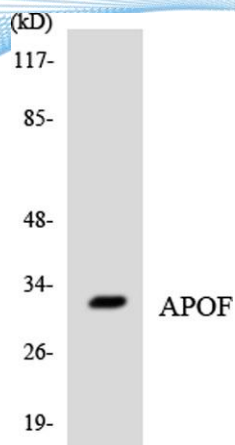


Western blot analysis of lysates from HeLa, Jurkat, COLO, and A549 cells, using APOF Antibody. The lane on the right is blocked with the synthesized peptide.





ELK Biotechnology



Western blot analysis of the lysates from COLO205 cells using APOF antibody.



+86-27-59760950

ELKbio@ELKbiotech.com

www.elkbiotech.com

23-2, No.388 Gaoxin 2nd Road,Wuhan East Lake Hi-tech Development Zone, Hubei , P.R.C