



Amphiphysin I rabbit pAb

Cat No.:ES1647

For research use only

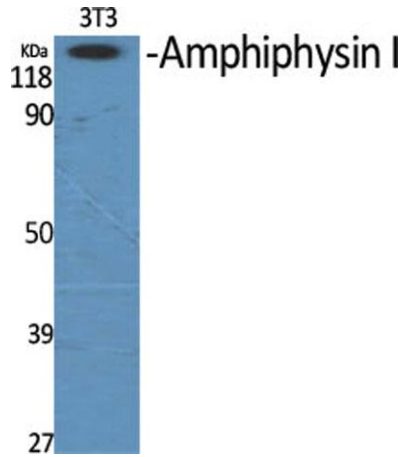
Overview

Product Name	Amphiphysin I rabbit pAb
Host species	Rabbit
Applications	WB;ELISA
Species Cross-Reactivity	Human;Mouse;Rat
Recommended dilutions	Western Blot: 1/500 - 1/2000. ELISA: 1/20000. Not yet tested in other applications.
Immunogen	The antiserum was produced against synthesized peptide derived from human AMPH. AA range:131-180
Specificity	Amphiphysin I Polyclonal Antibody detects endogenous levels of Amphiphysin I protein.
Formulation	Liquid in PBS containing 50% glycerol, 0.5% BSA and 0.02% sodium azide.
Storage	Store at -20°C. Avoid repeated freeze-thaw cycles.
Protein Name	Amphiphysin
Gene Name	AMPH
Cellular localization	Cytoplasmic vesicle, secretory vesicle, synaptic vesicle membrane; Peripheral membrane protein; Cytoplasmic side. Cytoplasm, cytoskeleton.
Purification	The antibody was affinity-purified from rabbit antiserum by affinity-chromatography using epitope-specific immunogen.
Clonality	Polyclonal
Concentration	1 mg/ml
Observed band	76kD
Human Gene ID	273
Human Swiss-Prot Number	P49418
Alternative Names	AMPH; AMPH1; Amphiphysin
Background	This gene encodes a protein associated with the cytoplasmic surface of synaptic vesicles. A subset of patients with stiff-man syndrome who were also affected by breast cancer are positive for autoantibodies against this protein. Alternate

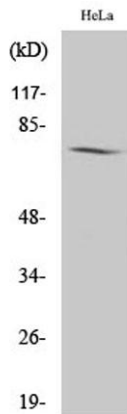




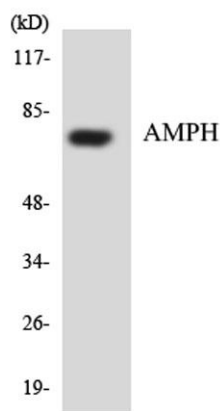
splicing of this gene results in two transcript variants encoding different isoforms. Additional splice variants have been described, but their full length sequences have not been determined. A pseudogene of this gene is found on chromosome 11.[provided by RefSeq, Nov 2010],



Western Blot analysis of various cells using Amphiphysin I Polyclonal Antibody



Western Blot analysis of HeLa cells using Amphiphysin I Polyclonal Antibody



Western blot analysis of the lysates from HUVEC cells using AMPH antibody.

