

AMPD2 rabbit pAb

Cat No.:ES1646

For research use only

Overview

Product Name	AMPD2 rabbit pAb
Host species	Rabbit
Applications	WB;ELISA
Species Cross-Reactivity	Human;Mouse;Rat
Recommended dilutions	Western Blot: 1/500 - 1/2000. ELISA: 1/5000. Not yet tested in other applications.
Immunogen	The antiserum was produced against synthesized peptide derived from human AMPD2. AA range:131-180
Specificity	AMPD2 Polyclonal Antibody detects endogenous levels of AMPD2 protein.
Formulation	Liquid in PBS containing 50% glycerol, 0.5% BSA and 0.02% sodium azide.
Storage	Store at -20°C. Avoid repeated freeze-thaw cycles.
Protein Name	AMP deaminase 2
Gene Name	AMPD2
Cellular localization	cytosol,
Purification	The antibody was affinity-purified from rabbit antiserum by affinity-chromatography using epitope-specific immunogen.
Clonality	Polyclonal
Concentration	1 mg/ml
Observed band	100kD
Human Gene ID	271
Human Swiss-Prot Number	Q01433
Alternative Names	AMPD2; AMP deaminase 2; AMP deaminase isoform L
Background	The protein encoded by this gene is important in purine metabolism by converting AMP to IMP. The encoded protein, which acts as a homotetramer, is one of three AMP deaminases found in mammals. Several transcript variants encoding different isoforms have been found for this gene. [provided

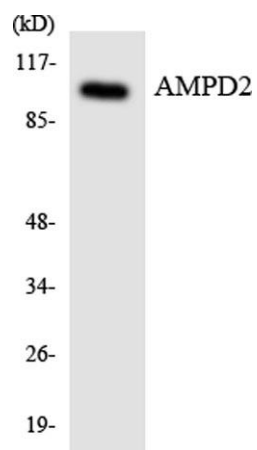
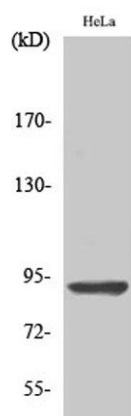




ELK Biotechnology

by RefSeq, Apr 2012],

Western Blot analysis of various cells using AMPD2
Polyclonal Antibody



Western blot analysis of the lysates from HeLa cells using
AMPD2 antibody.



+86-27-59760950

ELKbio@ELKbiotech.com

www.elkbiotech.com

23-2, No.388 Gaoxin 2nd Road, Wuhan East Lake Hi-tech Development Zone, Hubei, P.R.C.