



ALDH1B1 rabbit pAb

Cat No.:ES1637

For research use only

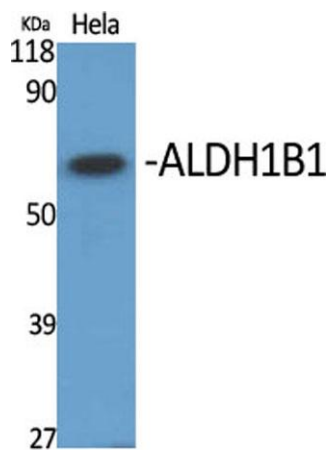
Overview

Product Name	ALDH1B1 rabbit pAb
Host species	Rabbit
Applications	WB;ELISA
Species Cross-Reactivity	Human;Monkey
Recommended dilutions	Western Blot: 1/500 - 1/2000. ELISA: 1/20000. Not yet tested in other applications.
Immunogen	The antiserum was produced against synthesized peptide derived from human ALDH1B1. AA range:311-360
Specificity	ALDH1B1 Polyclonal Antibody detects endogenous levels of ALDH1B1 protein.
Formulation	Liquid in PBS containing 50% glycerol, 0.5% BSA and 0.02% sodium azide.
Storage	Store at -20°C. Avoid repeated freeze-thaw cycles.
Protein Name	Aldehyde dehydrogenase X mitochondrial
Gene Name	ALDH1B1
Cellular localization	Mitochondrion matrix.
Purification	The antibody was affinity-purified from rabbit antiserum by affinity-chromatography using epitope-specific immunogen.
Clonality	Polyclonal
Concentration	1 mg/ml
Observed band	57kD
Human Gene ID	219
Human Swiss-Prot Number	P30837
Alternative Names	ALDH1B1; ALDH5; ALDHX; Aldehyde dehydrogenase X; mitochondrial; Aldehyde dehydrogenase 5; Aldehyde dehydrogenase family 1 member B1
Background	This protein belongs to the aldehyde dehydrogenases family of proteins. Aldehyde dehydrogenase is the second enzyme of the major oxidative pathway of alcohol metabolism. This gene does not contain introns in the coding sequence.

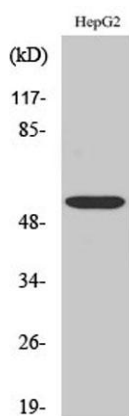




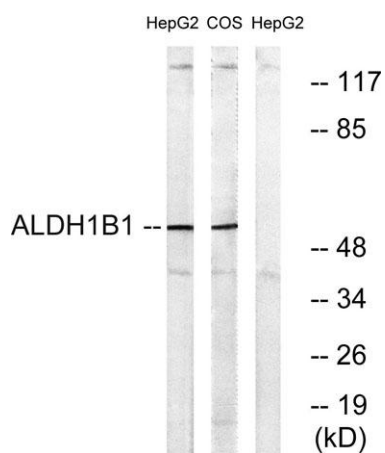
The variation of this locus may affect the development of alcohol-related problems. [provided by RefSeq, Jul 2008],



Western Blot analysis of various cells using ALDH1B1 Polyclonal Antibody diluted at 1:1000



Western Blot analysis of COS7 cells using ALDH1B1 Polyclonal Antibody diluted at 1:1000

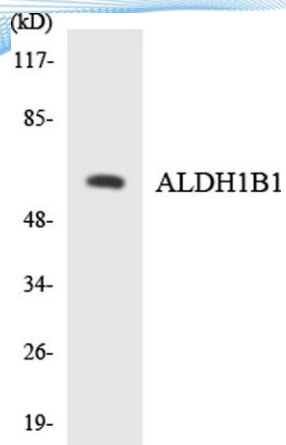


Western blot analysis of lysates from HepG2 and COS cells, using ALDH1B1 Antibody. The lane on the right is blocked with the synthesized peptide.





ELK Biotechnology



Western blot analysis of the lysates from HepG2 cells using ALDH1B1 antibody.



+86-27-59760950

ELKbio@ELKbiotech.com

www.elkbiotech.com

23-2, No.388 Gaoxin 2nd Road, Wuhan East Lake Hi-tech Development Zone, Hubei, P.R.C