



AIM2 rabbit pAb

Cat No.:ES1617

For research use only

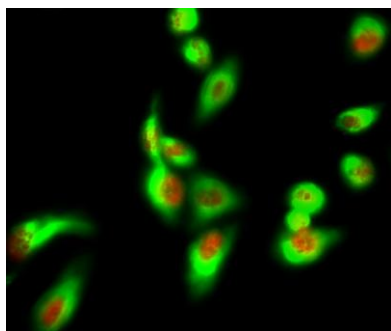
Overview

Product Name	AIM2 rabbit pAb
Host species	Rabbit
Applications	WB;IHC;IF;ELISA
Species Cross-Reactivity	Human; Mouse;Rat
Recommended dilutions	Western Blot: 1/500 - 1/2000. Immunohistochemistry: 1/100 - 1/300. Immunofluorescence: 1/200 - 1/1000. ELISA: 1/40000. Not yet tested in other applications.
Immunogen	The antiserum was produced against synthesized peptide derived from human AIM2. AA range:51-100
Specificity	AIM2 Polyclonal Antibody detects endogenous levels of AIM2 protein.
Formulation	Liquid in PBS containing 50% glycerol, 0.5% BSA and 0.02% sodium azide.
Storage	Store at -20°C. Avoid repeated freeze-thaw cycles.
Protein Name	Interferon-inducible protein AIM2
Gene Name	AIM2
Cellular localization	Nucleus. Cytoplasm. Activated inflammasomes can aggregate in the cytosol as speck-like particles.
Purification	The antibody was affinity-purified from rabbit antiserum by affinity-chromatography using epitope-specific immunogen.
Clonality	Polyclonal
Concentration	1 mg/ml
Observed band	39kD
Human Gene ID	9447
Human Swiss-Prot Number	O14862
Alternative Names	AIM2; Interferon-inducible protein AIM2; Absent in melanoma 2
Background	AIM2 is a member of the IFI20X /IFI16 family. It plays a putative role in tumorigenic reversion and may control cell proliferation. Interferon-gamma

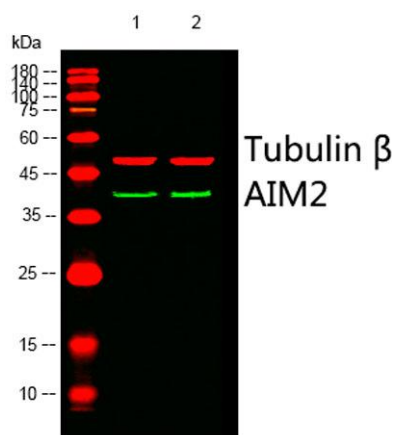




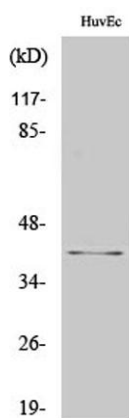
induces expression of AIM2. [provided by RefSeq, Jul 2008],



Immunofluorescence analysis of HeLa cell. 1, AIM2 Polyclonal Antibody (red) was diluted at 1:200 (4° overnight). HSP70 Monoclonal Antibody (3G10) (green) was diluted at 1:200 (4° overnight). 2, Goat Anti Rabbit Alexa Fluor 594 Catalog: RS3611 was diluted at 1:10



Western blot analysis of lysates from 1) HuvEc, 2) Jurkat cells, (Green) primary antibody was diluted at 1:1000, 4° over night, DyLight 800 secondary antibody (Immunoway: RS23920) was diluted at 1:10000, 37° 1 hour. (Red) Tubulin β Monoclonal Antibody (5G3) (Immunoway: YM3030) antibody was diluted at 1:5000 as loading control, 4° over night, DyLight 680 secondary antibody (Immunoway: RS23710) was diluted at 1:10000, 37° 1 hour.

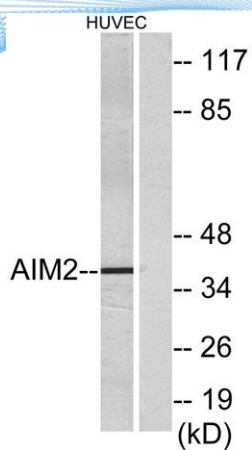


Western Blot analysis of HuvEc cells using AIM2 Polyclonal Antibody cells nucleus extracted by Minute TM Cytoplasmic and Nuclear Fractionation kit (SC-003, Invent biotech, MN, USA).





ELK Biotechnology



Western blot analysis of lysates from HUVEC cells, using AIM2 Antibody. The lane on the right is blocked with the synthesized peptide.



+86-27-59760950

ELKbio@ELKbiotech.com

www.elkbiotech.com

23-2, No.388 Gaoxin 2nd Road,Wuhan East Lake Hi-tech Development Zone, Hubei , P.R.C