



# AIF-M1 rabbit pAb

Cat No.:ES1615

For research use only

## Overview

Product Name	AIF-M1 rabbit pAb
Host species	Rabbit
Applications	WB;IHC;IF;ELISA
Species Cross-Reactivity	Human;Mouse;Rat
Recommended dilutions	Western Blot: 1/500 - 1/2000. Immunohistochemistry: 1/100 - 1/300. Immunofluorescence: 1/200 - 1/1000. ELISA: 1/5000. Not yet tested in other applications.
Immunogen	The antiserum was produced against synthesized peptide derived from human AIFM1. AA range:51-100
Specificity	AIF-M1 Polyclonal Antibody detects endogenous levels of AIF-M1 protein.
Formulation	Liquid in PBS containing 50% glycerol, 0.5% BSA and 0.02% sodium azide.
Storage	Store at -20°C. Avoid repeated freeze-thaw cycles.
Protein Name	Apoptosis-inducing factor 1 mitochondrial
Gene Name	AIFM1
Cellular localization	Mitochondrion intermembrane space . Mitochondrion inner membrane. Cytoplasm . Nucleus . Cytoplasm, perinuclear region . Proteolytic cleavage during or just after translocation into the mitochondrial intermembrane space (IMS) results in the formation of an inner-membrane-anchored mature form (AIFmit). During apoptosis, further proteolytic processing leads to a mature form, which is confined to the mitochondrial IMS in a soluble form (AIFsol). AIFsol is released to the cytoplasm in response to specific death signals, and translocated to the nucleus, where it induces nuclear apoptosis (PubMed:15775970). Colocalizes with EIF3G in the nucleus and perinuclear region (PubMed:17094969). . ; [Isoform 3]: Mitochondrion





#### Purification

#### Clonality

#### Concentration

#### Observed band

#### Human Gene ID

#### Human Swiss-Prot Number

#### Alternative Names

#### Background

intermembrane space . Mitochondrion inner membrane . Has a stronger membrane anchor  
The antibody was affinity-purified from rabbit antiserum by affinity-chromatography using epitope-specific immunogen.

Polyclonal

1 mg/ml

67kD

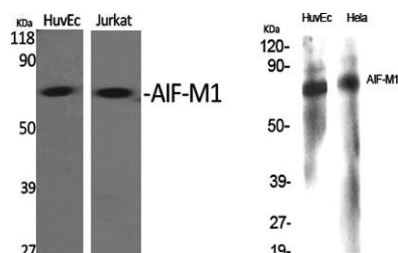
9131

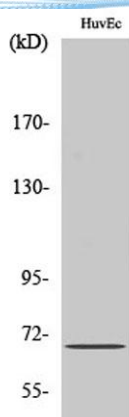
O95831

AIFM1; AIF; PDCD8; Apoptosis-inducing factor 1; mitochondrial; Programmed cell death protein 8

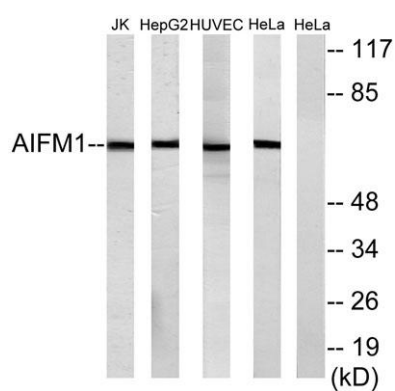
This gene encodes a flavoprotein essential for nuclear disassembly in apoptotic cells, and it is found in the mitochondrial intermembrane space in healthy cells. Induction of apoptosis results in the translocation of this protein to the nucleus where it affects chromosome condensation and fragmentation. In addition, this gene product induces mitochondria to release the apoptogenic proteins cytochrome c and caspase-9. Mutations in this gene cause combined oxidative phosphorylation deficiency 6 (COXPD6), a severe mitochondrial encephalomyopathy, as well as Cowchock syndrome, also known as X-linked recessive Charcot-Marie-Tooth disease-4 (CMTX-4), a disorder resulting in neuropathy, and axonal and motor-sensory defects with deafness and mental retardation. Alternative splicing results in multiple transcript variants. A related pseudogene has been identified on chromosome

Western Blot analysis of various cells using AIF-M1  
Polyclonal Antibody diluted at 1:1000

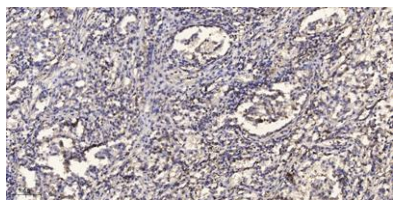




Western Blot analysis of Jurkat cells using AIF-M1  
Polyclonal Antibody diluted at 1:1000



Western blot analysis of lysates from HUVEC cells, HepG2 cells, HeLa cells, and Jurkat cells, using AIFM1 Antibody.  
The lane on the right is blocked with the synthesized peptide.



Immunohistochemical analysis of paraffin-embedded human Squamous cell carcinoma of lung. 1, Antibody was diluted at 1:200(4° overnight). 2, Tris-EDTA,pH9.0 was used for antigen retrieval. 3,Secondary antibody was diluted at 1:200(room temperature, 45min).

