



# ACSS1 rabbit pAb

Cat No.:ES1588

For research use only

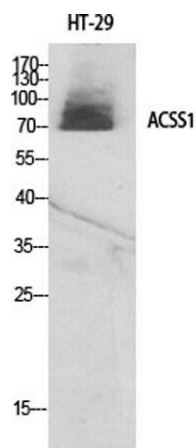
## Overview

<b>Product Name</b>	ACSS1 rabbit pAb
<b>Host species</b>	Rabbit
<b>Applications</b>	WB;IHC;IF;ELISA
<b>Species Cross-Reactivity</b>	Human;Mouse
<b>Recommended dilutions</b>	Western Blot: 1/500 - 1/2000. Immunohistochemistry: 1/100 - 1/300. ELISA: 1/40000. Not yet tested in other applications.
<b>Immunogen</b>	The antiserum was produced against synthesized peptide derived from human ACSS1. AA range:611-660
<b>Specificity</b>	ACSS1 Polyclonal Antibody detects endogenous levels of ACSS1 protein.
<b>Formulation</b>	Liquid in PBS containing 50% glycerol, 0.5% BSA and 0.02% sodium azide.
<b>Storage</b>	Store at -20°C. Avoid repeated freeze-thaw cycles.
<b>Protein Name</b>	Acetyl-coenzyme A synthetase 2-like mitochondrial
<b>Gene Name</b>	ACSS1
<b>Cellular localization</b>	Mitochondrion matrix .
<b>Purification</b>	The antibody was affinity-purified from rabbit antiserum by affinity-chromatography using epitope-specific immunogen.
<b>Clonality</b>	Polyclonal
<b>Concentration</b>	1 mg/ml
<b>Observed band</b>	75kD
<b>Human Gene ID</b>	84532
<b>Human Swiss-Prot Number</b>	Q9NUB1
<b>Alternative Names</b>	ACSS1; ACAS2L; KIAA1846; Acetyl-coenzyme A synthetase 2-like; mitochondrial; Acetate--CoA ligase 2; Acetyl-CoA synthetase 2; AceCS2; Acyl-CoA synthetase short-chain family member 1
<b>Background</b>	This gene encodes a mitochondrial acetyl-CoA synthetase enzyme. A similar protein in mice plays an important role in the tricarboxylic acid cycle by

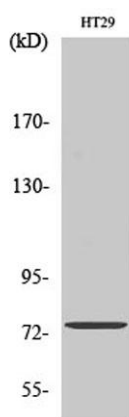




catalyzing the conversion of acetate to acetyl CoA. Alternatively spliced transcript variants encoding multiple isoforms have been observed for this gene. [provided by RefSeq, Nov 2011],

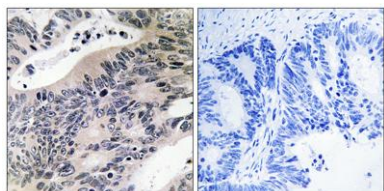


Western Blot analysis of various cells using ACSS1 Polyclonal Antibody



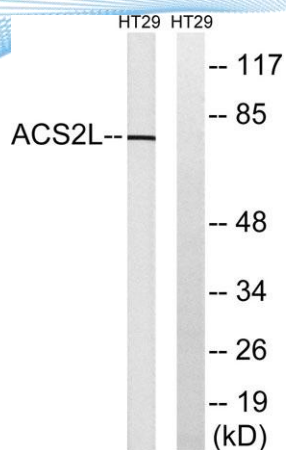
Western Blot analysis of HT29 cells using ACSS1 Polyclonal Antibody

Immunohistochemistry analysis of paraffin-embedded human colon carcinoma tissue, using ACSS1 Antibody. The picture on the right is blocked with the synthesized peptide.





**ELK Biotechnology**



Western blot analysis of lysates from HT-29 cells, using ACS2L Antibody. The lane on the right is blocked with the synthesized peptide.



+86-27-59760950

[ELKbio@ELKbiotech.com](mailto:ELKbio@ELKbiotech.com)

[www.elkbiotech.com](http://www.elkbiotech.com)

23-2, No.388 Gaoxin 2nd Road,Wuhan East Lake Hi-tech Development Zone, Hubei , P.R.C