



ACSL6 rabbit pAb

Cat No.:ES1587

For research use only

Overview

Product Name	ACSL6 rabbit pAb
Host species	Rabbit
Applications	WB;IHC;IF;ELISA
Species Cross-Reactivity	Human;Mouse;Rat
Recommended dilutions	Western Blot: 1/500 - 1/2000. Immunohistochemistry: 1/100 - 1/300. ELISA: 1/40000. Not yet tested in other applications.
Immunogen	The antiserum was produced against synthesized peptide derived from human ACSL6. AA range:499-548
Specificity	ACSL6 Polyclonal Antibody detects endogenous levels of ACSL6 protein.
Formulation	Liquid in PBS containing 50% glycerol, 0.5% BSA and 0.02% sodium azide.
Storage	Store at -20°C. Avoid repeated freeze-thaw cycles.
Protein Name	Long-chain-fatty-acid--CoA ligase 6
Gene Name	ACSL6
Cellular localization	Mitochondrion outer membrane ; Single-pass type III membrane protein . Peroxisome membrane ; Single-pass type III membrane protein . Microsome membrane ; Single-pass type III membrane protein . Endoplasmic reticulum membrane ; Single-pass type III membran
Purification	The antibody was affinity-purified from rabbit antiserum by affinity-chromatography using epitope-specific immunogen.
Clonality	Polyclonal
Concentration	1 mg/ml
Observed band	78kD
Human Gene ID	23305
Human Swiss-Prot Number	Q9UKU0
Alternative Names	ACSL6; ACS2; FAFL6; KIAA0837; LACS5; Long-chain-fatty-acid--CoA ligase 6; Long-chain

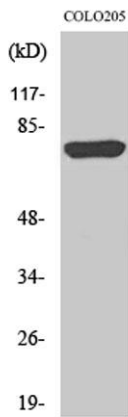




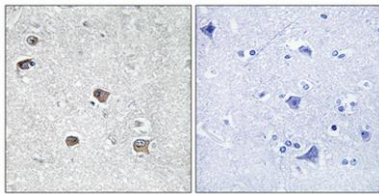
Background

acyl-CoA synthetase 6; LACS 6

The protein encoded by this gene catalyzes the formation of acyl-CoA from fatty acids, ATP, and CoA, using magnesium as a cofactor. The encoded protein plays a major role in fatty acid metabolism in the brain. Translocations with the ETV6 gene are causes of myelodysplastic syndrome with basophilia, acute myelogenous leukemia with eosinophilia, and acute eosinophilic leukemia. Several transcript variants encoding different isoforms have been found for this gene.[provided by RefSeq, Apr 2011],



Western Blot analysis of various cells using ACSL6 Polyclonal Antibody diluted at 1:1000

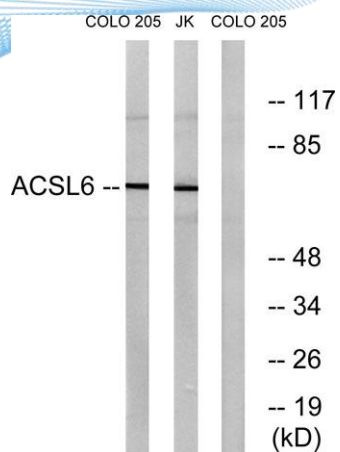


Immunohistochemical analysis of paraffin-embedded Human brain. Antibody was diluted at 1:100(4° overnight). High-pressure and temperature Tris-EDTA,pH8.0 was used for antigen retrieval. Negative contrl (right) obtaned from antibody was pre-absorbed by i





ELK Biotechnology



Western blot analysis of lysates from COLO and Jurkat cells, using ACSL6 Antibody. The lane on the right is blocked with the synthesized peptide.



+86-27-59760950

ELKbio@ELKbiotech.com

www.elkbiotech.com

23-2, No.388 Gaoxin 2nd Road, Wuhan East Lake Hi-tech Development Zone, Hubei, P.R.C.