



Acrp30 rabbit pAb

Cat No.:ES1586

For research use only

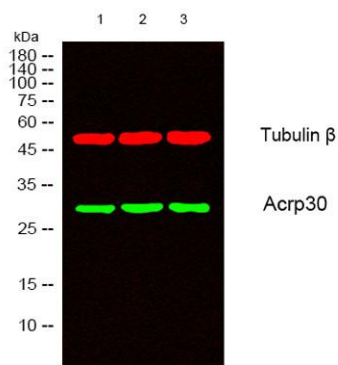
Overview

Product Name	Acrp30 rabbit pAb
Host species	Rabbit
Applications	WB;ELISA
Species Cross-Reactivity	Human;Mouse;Rat
Recommended dilutions	Western Blot: 1/500 - 1/2000. ELISA: 1/10000. Not yet tested in other applications.
Immunogen	The antiserum was produced against synthesized peptide derived from human Acrp30. AA range:6-55
Specificity	Acrp30 Polyclonal Antibody detects endogenous levels of Acrp30 protein.
Formulation	Liquid in PBS containing 50% glycerol, 0.5% BSA and 0.02% sodium azide.
Storage	Store at -20°C. Avoid repeated freeze-thaw cycles.
Protein Name	Adiponectin
Gene Name	ADIPOQ
Cellular localization	Secreted .
Purification	The antibody was affinity-purified from rabbit antiserum by affinity-chromatography using epitope-specific immunogen.
Clonality	Polyclonal
Concentration	1 mg/ml
Observed band	30kD
Human Gene ID	9370
Human Swiss-Prot Number	Q15848
Alternative Names	ADIPOQ; ACDC; ACRP30; APM1; GBP28; Adiponectin; 30 kDa adipocyte complement-related protein; Adipocyte complement-related 30 kDa protein; ACRP30; Adipocyte; C1q and collagen domain-containing protein; Adipose most abundant gene transcript 1
Background	adiponectin, C1Q and collagen domain containing(ADIPOQ) Homo sapiens This gene is expressed in adipose tissue exclusively. It encodes a

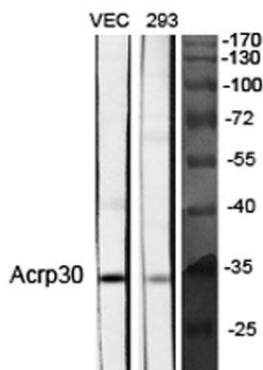




protein with similarity to collagens X and VIII and complement factor C1q. The encoded protein circulates in the plasma and is involved with metabolic and hormonal processes. Mutations in this gene are associated with adiponectin deficiency. Multiple alternatively spliced variants, encoding the same protein, have been identified. [provided by RefSeq, Apr 2010],



Western blot analysis of lysates from 1) HeLa, 2) VEC, 3) 293 cells, (Green) primary antibody was diluted at 1:1000, 4° over night, secondary antibody (cat:RS23920) was diluted at 1:10000, 37° 1 hour. (Red) Tubulin beta Monoclonal Antibody (5G3) (cat:YM3030) anti



Western Blot analysis of various cells using Acrp30 Polyclonal Antibody diluted at 1:1000

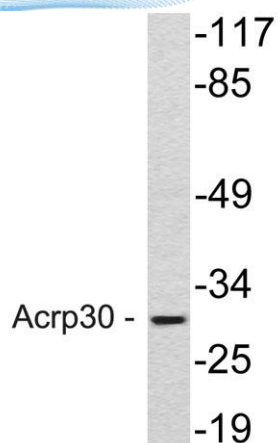


Western Blot analysis of HeLa cells using Acrp30 Polyclonal Antibody diluted at 1:1000





ELK Biotechnology



Western blot analysis of lysate from HeLa cells, using Acrp30 antibody.



+86-27-59760950

ELKbio@ELKbiotech.com

www.elkbiotech.com

23-2, No.388 Gaoxin 2nd Road, Wuhan East Lake Hi-tech Development Zone, Hubei, P.R.C.