



# AASD-PPT rabbit pAb

**Cat No.:ES1559**

**For research use only**

## Overview

---

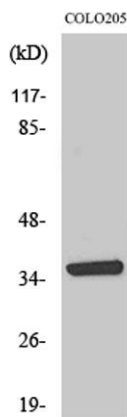
<b>Product Name</b>	AASD-PPT rabbit pAb
<b>Host species</b>	Rabbit
<b>Applications</b>	WB;IHC;IF;ELISA
<b>Species Cross-Reactivity</b>	Human;Mouse;Rat
<b>Recommended dilutions</b>	Western Blot: 1/500 - 1/2000. Immunohistochemistry: 1/100 - 1/300. ELISA: 1/40000. Not yet tested in other applications.
<b>Immunogen</b>	The antiserum was produced against synthesized peptide derived from human AASDHPPT. AA range:11-60
<b>Specificity</b>	AASD-PPT Polyclonal Antibody detects endogenous levels of AASD-PPT protein.
<b>Formulation</b>	Liquid in PBS containing 50% glycerol, 0.5% BSA and 0.02% sodium azide.
<b>Storage</b>	Store at -20°C. Avoid repeated freeze-thaw cycles.
<b>Protein Name</b>	L-aminoadipate-semialdehyde dehydrogenase-phosphopantetheinyl transferase
<b>Gene Name</b>	AASDHPPT
<b>Cellular localization</b>	Cytoplasm, cytosol .
<b>Purification</b>	The antibody was affinity-purified from rabbit antiserum by affinity-chromatography using epitope-specific immunogen.
<b>Clonality</b>	Polyclonal
<b>Concentration</b>	1 mg/ml
<b>Observed band</b>	36kD
<b>Human Gene ID</b>	60496
<b>Human Swiss-Prot Number</b>	Q9NRN7
<b>Alternative Names</b>	AASDHPPT; CGI-80; HAH-P; HSPC223; x0005; L-aminoadipate-semialdehyde dehydrogenase-phosphopantetheinyl transferase; 4'-phosphopantetheinyl transferase; Alpha-aminoadipic semialdehyde dehydrogenase-phosphopantetheinyl transferase;



## Background

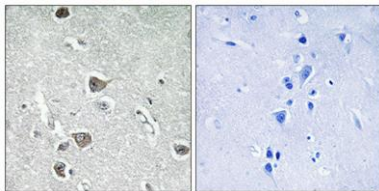
### AASD-PPT;

The protein encoded by this gene is similar to *Saccharomyces cerevisiae* LYS5, which is required for the activation of the alpha-amino adipate dehydrogenase in the biosynthetic pathway of lysine. Yeast alpha-amino adipate dehydrogenase converts alpha-biosynthetic-amino adipate semialdehyde to alpha-amino adipate. It has been suggested that defects in the human gene result in pipecolic acidemia. [provided by RefSeq, Jul 2008],



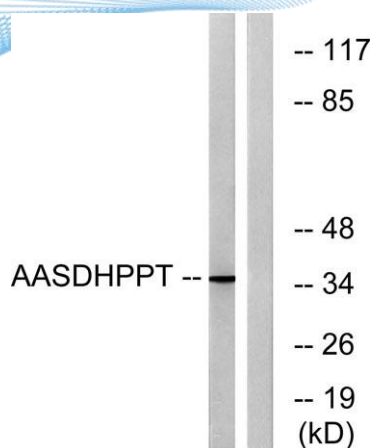
Western Blot analysis of various cells using AASD-PPT Polyclonal Antibody

Immunohistochemical analysis of paraffin-embedded Human brain. Antibody was diluted at 1:100(4° overnight). High-pressure and temperature Tris-EDTA,pH8.0 was used for antigen retrieval. Negative contrl (right) obtained from antibody was pre-absorbed by i





**ELK Biotechnology**



Western blot analysis of lysates from COLO cells, using AASDHPPT Antibody. The lane on the right is blocked with the synthesized peptide.