



p120 (phospho Tyr228) rabbit pAb

Cat No.:ES1522

For research use only

Overview

Product Name	p120 (phospho Tyr228) rabbit pAb
Host species	Rabbit
Applications	WB;IHC;IF;ELISA
Species Cross-Reactivity	Human;Mouse;Rat
Recommended dilutions	Western Blot: 1/500 - 1/2000. Immunohistochemistry: 1/100 - 1/300. Immunofluorescence: 1/200 - 1/1000. ELISA: 1/10000. Not yet tested in other applications.
Immunogen	The antiserum was produced against synthesized peptide derived from human Catenin-delta1 around the phosphorylation site of Tyr228. AA range:201-250
Specificity	Phospho-p120 (Y228) Polyclonal Antibody detects endogenous levels of p120 protein only when phosphorylated at Y228.
Formulation	Liquid in PBS containing 50% glycerol, 0.5% BSA and 0.02% sodium azide.
Storage	Store at -20°C. Avoid repeated freeze-thaw cycles.
Protein Name	Catenin delta-1
Gene Name	CTNND1
Cellular localization	Cell junction, adherens junction . Cytoplasm . Nucleus . Cell membrane . Interaction with GLIS2 promotes nuclear translocation (By similarity). Detected at cell-cell contacts (PubMed:15240885, PubMed:17047063). NANOS1 induces its translocation from sites of cell-cell contact to the cytoplasm (PubMed:17047063). CDH1 enhances cell membrane localization (PubMed:15240885). Isoforms 4A and 1AB are excluded from the nucleus (PubMed:11896187). .; [Isoform 1A]: Nucleus .; [Isoform 2A]: Nucleus .; [Isoform 3A]: Nucleus .
Purification	The antibody was affinity-purified from rabbit antiserum by affinity-chromatography using

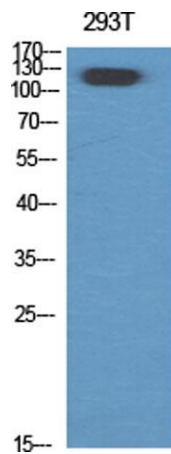




Clonality	epitope-specific immunogen.
Concentration	Polyclonal
Observed band	1 mg/ml
Human Gene ID	108kD
Human Swiss-Prot Number	1500
Alternative Names	O60716 CTNND1; KIAA0384; Catenin delta-1; Cadherin-associated Src substrate; CAS; p120 catenin; p120(ctn); p120(cas)

Background

catenin delta 1(CTNND1) Homo sapiens This gene encodes a member of the Armadillo protein family, which function in adhesion between cells and signal transduction. Multiple translation initiation codons and alternative splicing result in many different isoforms being translated. Not all of the full-length natures of the described transcript variants have been determined. Read-through transcription also exists between this gene and the neighboring upstream thioredoxin-related transmembrane protein 2 (TMX2) gene. [provided by RefSeq, Dec 2010],

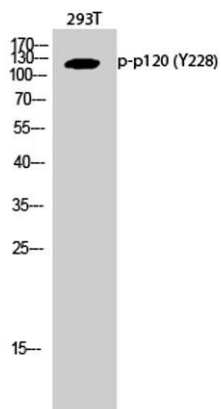


Western Blot analysis of various cells using Phospho-p120 (Y228) Polyclonal Antibody diluted at 1:500

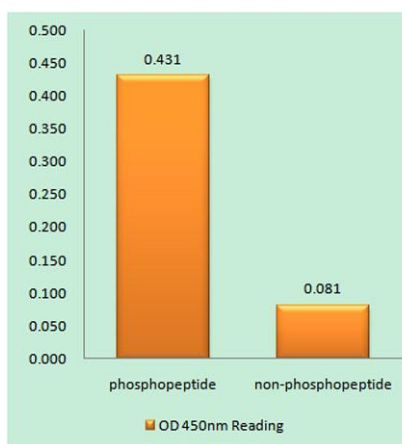




Western Blot analysis of 293T cells using Phospho-p120 (Y228) Polyclonal Antibody diluted at 1:500



Enzyme-Linked Immunosorbent Assay (Phospho-ELISA) for Immunogen Phosphopeptide (Phospho-left) and Non-Phosphopeptide (Phospho-right), using Catenin-delta1 (Phospho-Tyr228) Antibody



Immunofluorescence analysis of HUVEC cells, using Catenin-delta1 (Phospho-Tyr228) Antibody. The picture on the right is blocked with the phospho peptide.

