



Calmodulin (phospho Thr80/S82) rabbit pAb

Cat No.:ES1521

For research use only

Overview

| | |
|------------------------------|--|
| Product Name | Calmodulin (phospho Thr80/S82) rabbit pAb |
| Host species | Rabbit |
| Applications | WB;IHC;IF;ELISA |
| Species | Human;Mouse;Rat |
| Cross-Reactivity | |
| Recommended dilutions | Western Blot: 1/500 - 1/2000. Immunohistochemistry: 1/100 - 1/300. Immunofluorescence: 1/200 - 1/1000. ELISA: 1/5000. Not yet tested in other applications. |
| Immunogen | The antiserum was produced against synthesized peptide derived from human Calmodulin around the phosphorylation site of Thr79 and Ser81. AA range:46-95 |
| Specificity | Phospho-Calmodulin (T80/S82) Polyclonal Antibody detects endogenous levels of Calmodulin protein only when phosphorylated at T80/S82. |
| Formulation | Liquid in PBS containing 50% glycerol, 0.5% BSA and 0.02% sodium azide. |
| Storage | Store at -20°C. Avoid repeated freeze-thaw cycles. |
| Protein Name | Calmodulin |
| Gene Name | CALM1 |
| Cellular localization | spindle pole,extracellular region,nucleus,nucleoplasm,cytoplasm,centrosome,cytosol,spindle microtubule,plasma membrane,voltage-gated potassium channel complex,sarcomere,growth cone,vesicle,calcium channel complex,G |
| Purification | The antibody was affinity-purified from rabbit antiserum by affinity-chromatography using epitope-specific immunogen. |
| Clonality | Polyclonal |
| Concentration | 1 mg/ml |
| Observed band | |
| Human Gene ID | 801/805/808 |
| Human | P62158 |
| Swiss-Prot | |





Number

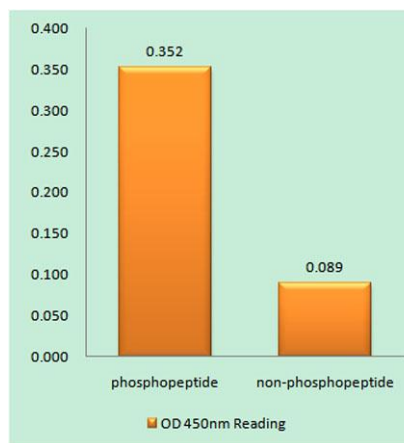
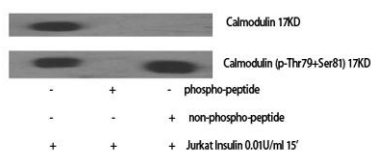
**Alternative
Names**

Background

CALM1; CALM; CAM; CAM1; CALM2; CAM2; CAMB; CALM3;
CALML2; CAM3; CAMC; CAMIII; Calmodulin; CaM

This gene encodes a member of the EF-hand calcium-binding protein family. It is one of three genes which encode an identical calcium binding protein which is one of the four subunits of phosphorylase kinase. Two pseudogenes have been identified on chromosome 7 and X. Multiple transcript variants encoding different isoforms have been found for this gene.[provided by RefSeq, Oct 2009],

Western Blot analysis of various cells using
Phospho-Calmodulin (T80/S82) Polyclonal Antibody



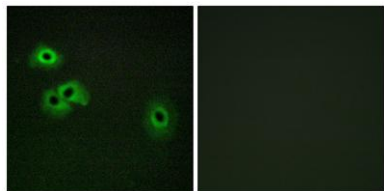
Enzyme-Linked Immunosorbent Assay (Phospho-ELISA) for
Immunogen Phosphopeptide (Phospho-left) and
Non-Phosphopeptide (Phospho-right), using Calmodulin
(Phospho-Thr79+Ser81) Antibody



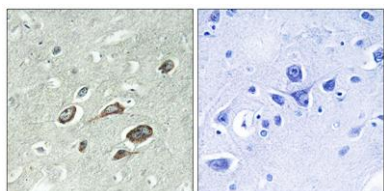


ELK Biotechnology

Immunofluorescence analysis of HepG2 cells, using Calmodulin (Phospho-Thr79+Ser81) Antibody. The picture on the right is blocked with the phospho peptide.



Immunohistochemistry analysis of paraffin-embedded human brain, using Calmodulin (Phospho-Thr79+Ser81) Antibody. The picture on the right is blocked with the phospho peptide.



+86-27-59760950

ELKbio@ELKbiotech.com

www.elkbiotech.com

23-2, No.388 Gaoxin 2nd Road, Wuhan East Lake Hi-tech Development Zone, Hubei, P.R.C.