



MEF-2 (phospho Ser408) rabbit pAb

Cat No.:ES1509

For research use only

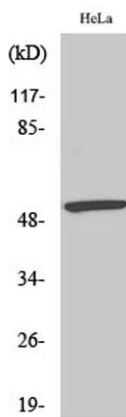
Overview

Product Name	MEF-2 (phospho Ser408) rabbit pAb
Host species	Rabbit
Applications	WB;IHC;IF;ELISA
Species Cross-Reactivity	Human;Mouse;Rat
Recommended dilutions	Western Blot: 1/500 - 1/2000. Immunohistochemistry: 1/100 - 1/300. Immunofluorescence: 1/200 - 1/1000. ELISA: 1/40000. Not yet tested in other applications.
Immunogen	The antiserum was produced against synthesized peptide derived from human MEF2A around the phosphorylation site of Ser408. AA range:374-423
Specificity	Phospho-MEF-2 (S408) Polyclonal Antibody detects endogenous levels of MEF-2 protein only when phosphorylated at S408.
Formulation	Liquid in PBS containing 50% glycerol, 0.5% BSA and 0.02% sodium azide.
Storage	Store at -20°C. Avoid repeated freeze-thaw cycles.
Protein Name	Myocyte-specific enhancer factor 2A
Gene Name	MEF2A
Cellular localization	Nucleus .
Purification	The antibody was affinity-purified from rabbit antiserum by affinity-chromatography using epitope-specific immunogen.
Clonality	Polyclonal
Concentration	1 mg/ml
Observed band	55kD
Human Gene ID	4205
Human Swiss-Prot Number	Q02078
Alternative Names	MEF2A; MEF2; Myocyte-specific enhancer factor 2A; Serum response factor-like protein 1
Background	The protein encoded by this gene is a DNA-binding transcription factor that activates many muscle-specific, growth factor-induced, and

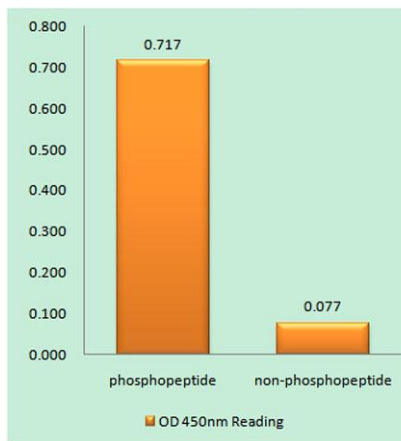




stress-induced genes. The encoded protein can act as a homodimer or as a heterodimer and is involved in several cellular processes, including muscle development, neuronal differentiation, cell growth control, and apoptosis. Defects in this gene could be a cause of autosomal dominant coronary artery disease 1 with myocardial infarction (ADCAD1). Several transcript variants encoding different isoforms have been found for this gene.[provided by RefSeq, Jan 2010],



Western Blot analysis of various cells using Phospho-MEF-2 (S408) Polyclonal Antibody cells nucleus extracted by Minute TM Cytoplasmic and Nuclear Fractionation kit (SC-003, Inventbiotech, MN, USA).



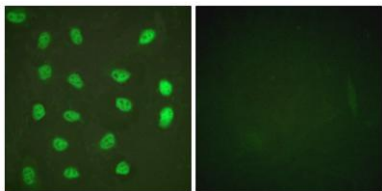
Enzyme-Linked Immunosorbent Assay (Phospho-ELISA) for Immunogen Phosphopeptide (Phospho-left) and Non-Phosphopeptide (Phospho-right), using MEF2A (Phospho-Ser408) Antibody



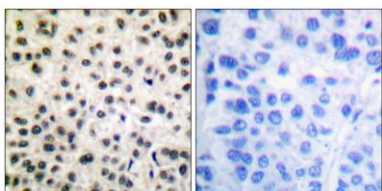


ELK Biotechnology

Immunofluorescence analysis of HeLa cells treated with PMA 125ng/ml 30', using MEF2A (Phospho-Ser408) Antibody. The picture on the right is blocked with the phospho peptide.



Immunohistochemistry analysis of paraffin-embedded human breast carcinoma, using MEF2A (Phospho-Ser408) Antibody. The picture on the right is blocked with the phospho peptide.



+86-27-59760950

ELKbio@ELKbiotech.com

www.elkbiotech.com

23-2, No.388 Gaoxin 2nd Road, Wuhan East Lake Hi-tech Development Zone, Hubei, P.R.C