



# CREB-1 (phospho Ser142) rabbit pAb

Cat No.:ES1506

For research use only

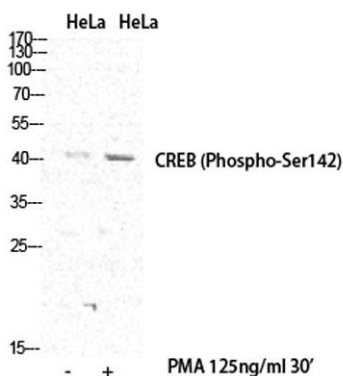
## Overview

<b>Product Name</b>	CREB-1 (phospho Ser142) rabbit pAb
<b>Host species</b>	Rabbit
<b>Applications</b>	WB;IHC;IF;ELISA
<b>Species Cross-Reactivity</b>	Human;Mouse;Rat
<b>Recommended dilutions</b>	Western Blot: 1/500 - 1/2000. Immunohistochemistry: 1/100 - 1/300. Immunofluorescence: 1/200 - 1/1000. ELISA: 1/40000. Not yet tested in other applications.
<b>Immunogen</b>	The antiserum was produced against synthesized peptide derived from human CREB around the phosphorylation site of Ser142. AA range:111-160
<b>Specificity</b>	Phospho-CREB-1 (S142) Polyclonal Antibody detects endogenous levels of CREB-1 protein only when phosphorylated at S142.
<b>Formulation</b>	Liquid in PBS containing 50% glycerol, 0.5% BSA and 0.02% sodium azide.
<b>Storage</b>	Store at -20°C. Avoid repeated freeze-thaw cycles.
<b>Protein Name</b>	Cyclic AMP-responsive element-binding protein 1
<b>Gene Name</b>	CREB1
<b>Cellular localization</b>	Nucleus .
<b>Purification</b>	The antibody was affinity-purified from rabbit antiserum by affinity-chromatography using epitope-specific immunogen.
<b>Clonality</b>	Polyclonal
<b>Concentration</b>	1 mg/ml
<b>Observed band</b>	37kD
<b>Human Gene ID</b>	1385
<b>Human Swiss-Prot Number</b>	P16220
<b>Alternative Names</b>	CREB1; Cyclic AMP-responsive element-binding protein 1; CREB-1; cAMP-responsive element-binding protein 1
<b>Background</b>	This gene encodes a transcription factor that is a member of the leucine zipper family of DNA binding

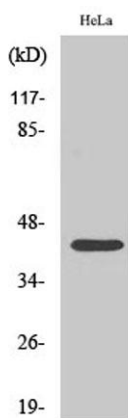




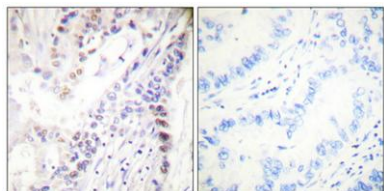
proteins. This protein binds as a homodimer to the cAMP-responsive element, an octameric palindrome. The protein is phosphorylated by several protein kinases, and induces transcription of genes in response to hormonal stimulation of the cAMP pathway. Alternate splicing of this gene results in several transcript variants encoding different isoforms. [provided by RefSeq, Mar 2016],



Western Blot analysis of various cells using Phospho-CREB-1 (S142) Polyclonal Antibody diluted at 1:500

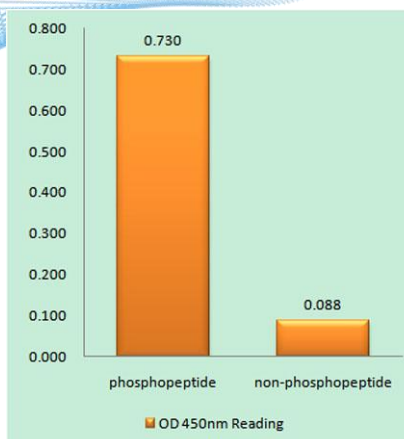


Western Blot analysis of HeLa cells using Phospho-CREB-1 (S142) Polyclonal Antibody diluted at 1:500



Immunohistochemical analysis of paraffin-embedded Human lung cancer. Antibody was diluted at 1:100(4° overnight). High-pressure and temperature Tris-EDTA,pH8.0 was used for antigen retrieval. Negative contrl (right) obtained from antibody was pre-absorbe





Enzyme-Linked Immunosorbent Assay (Phospho-ELISA) for Immunogen Phosphopeptide (Phospho-left) and Non-Phosphopeptide (Phospho-right), using CREB (Phospho-Ser142) Antibody

