



FRS2 (phospho Tyr436) rabbit pAb

Cat No.:ES1496

For research use only

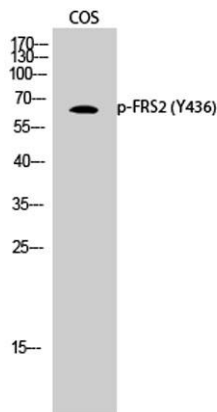
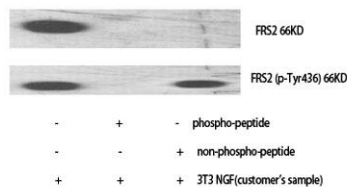
Overview

Product Name	FRS2 (phospho Tyr436) rabbit pAb
Host species	Rabbit
Applications	WB;IHC;IF;ELISA
Species Cross-Reactivity	Human;Mouse;Monkey
Recommended dilutions	Western Blot: 1/500 - 1/2000. Immunohistochemistry: 1/100 - 1/300. ELISA: 1/10000. Not yet tested in other applications.
Immunogen	The antiserum was produced against synthesized peptide derived from human FRS2 around the phosphorylation site of Tyr436. AA range:402-451
Specificity	Phospho-FRS2 (Y436) Polyclonal Antibody detects endogenous levels of FRS2 protein only when phosphorylated at Y436.
Formulation	Liquid in PBS containing 50% glycerol, 0.5% BSA and 0.02% sodium azide.
Storage	Store at -20°C. Avoid repeated freeze-thaw cycles.
Protein Name	Fibroblast growth factor receptor substrate 2
Gene Name	FRS2
Cellular localization	Endomembrane system. Cytoplasmic, membrane-bound.
Purification	The antibody was affinity-purified from rabbit antiserum by affinity-chromatography using epitope-specific immunogen.
Clonality	Polyclonal
Concentration	1 mg/ml
Observed band	65kD
Human Gene ID	10818
Human Swiss-Prot Number	Q8WU20
Alternative Names	FRS2; Fibroblast growth factor receptor substrate 2; FGFR substrate 2; FGFR-signaling adaptor SNT; Suc1-associated neurotrophic factor target 1; SNT-1
Background	function:Adapter protein that links FGR and NGF receptors to downstream signaling pathways.



Involved in the activation of MAP kinases.
Modulates signaling via SHC1 by competing for a common binding site on NTRK1.,PTM:Phosphorylated on tyrosine residues upon stimulation by NGF.,PTM:Ubiquitinated when tyrosine phosphorylated and in a complex with GRB2. The unphosphorylated form is not subject to ubiquitination.,sequence caution:Translated as stop.,similarity:Contains 1 IRS-type PTB domain.,subcellular location:Cytoplasmic, membrane-bound.,subunit:Part of a complex containing FRS2, GRB2 and SOS1. Part of a complex containing GRB2 and CBL. Binds RET (By similarity). Binds FGFR1, SUC1, NTRK1, NTRK2, NTRK3 and SRC. The tyrosine-phosphorylated protein binds the SH2 domains of GRB2 and PTPN11.,tissue specificity:Highly expressed in heart, brain, spleen, lung, liver, skeletal muscle, kidney and testis.,

Western Blot analysis of various cells using Phospho-FRS2 (Y436) Polyclonal Antibody

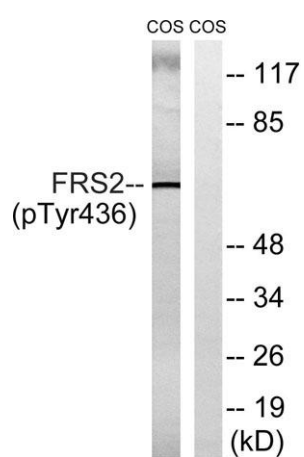
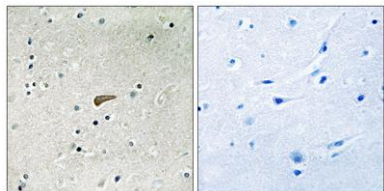


Western Blot analysis of COS cells using Phospho-FRS2 (Y436) Polyclonal Antibody





Immunohistochemistry analysis of paraffin-embedded human brain, using FRS2 (Phospho-Tyr436) Antibody. The picture on the right is blocked with the phospho peptide.



Western blot analysis of lysates from COS7 cells , using FRS2 (Phospho-Tyr436) Antibody. The lane on the right is blocked with the phospho peptide.

