

# PLC $\beta$ 3 (phospho Ser537) rabbit pAb

Cat No.:ES1488

For research use only

## Overview

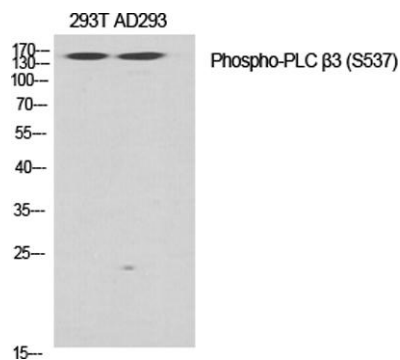
Product Name	PLC $\beta$ 3 (phospho Ser537) rabbit pAb
Host species	Rabbit
Applications	WB;IHC;IF;ELISA
Species Cross-Reactivity	Human;Mouse;Rat
Recommended dilutions	Western Blot: 1/500 - 1/2000. Immunohistochemistry: 1/100 - 1/300. ELISA: 1/10000. Not yet tested in other applications.
Immunogen	The antiserum was produced against synthesized peptide derived from human PLC beta3 around the phosphorylation site of Ser537. AA range:503-552
Specificity	Phospho-PLC $\beta$ 3 (S537) Polyclonal Antibody detects endogenous levels of PLC $\beta$ 3 protein only when phosphorylated at S537.
Formulation	Liquid in PBS containing 50% glycerol, 0.5% BSA and 0.02% sodium azide.
Storage	Store at -20°C. Avoid repeated freeze-thaw cycles.
Protein Name	1-phosphatidylinositol 4,5-bisphosphate phosphodiesterase beta-3
Gene Name	PLCB3
Cellular localization	Cytoplasm . Membrane . Nucleus . And particulate fractions. .
Purification	The antibody was affinity-purified from rabbit antiserum by affinity-chromatography using epitope-specific immunogen.
Clonality	Polyclonal
Concentration	1 mg/ml
Observed band	150kD
Human Gene ID	5331
Human Swiss-Prot Number	Q01970
Alternative Names	PLCB3; 1-phosphatidylinositol 4; 5-bisphosphate phosphodiesterase beta-3; Phosphoinositide phospholipase C-beta-3; Phospholipase C-beta-3; PLC-beta-3



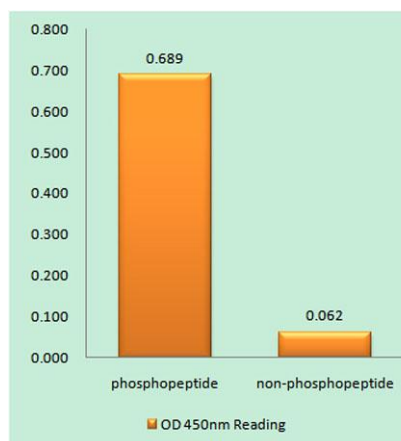
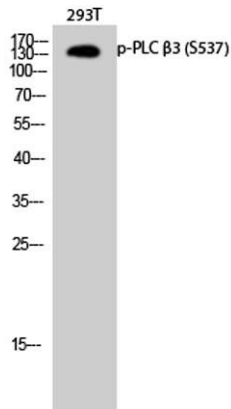
## Background

This gene encodes a member of the phosphoinositide phospholipase C beta enzyme family that catalyze the production of the secondary messengers diacylglycerol and inositol 1,4,5-triphosphate from phosphatidylinositol in G-protein-linked receptor-mediated signal transduction. Alternative splicing results in multiple transcript variants.[provided by RefSeq, May 2010],

Western Blot analysis of various cells using Phospho-PLC  $\beta$ 3 (S537) Polyclonal Antibody diluted at 1:500



Western Blot analysis of 293T cells using Phospho-PLC  $\beta$ 3 (S537) Polyclonal Antibody diluted at 1:500



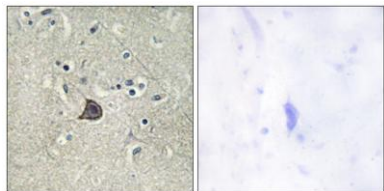
Enzyme-Linked Immunosorbent Assay (Phospho-ELISA) for Immunogen Phosphopeptide (Phospho-left) and Non-Phosphopeptide (Phospho-right), using PLC beta3 (Phospho-Ser537) Antibody





**ELK Biotechnology**

Immunohistochemistry analysis of paraffin-embedded human brain, using PLC beta3 (Phospho-Ser537) Antibody. The picture on the right is blocked with the phospho peptide.



+86-27-59760950

[ELKbio@ELKbiotech.com](mailto:ELKbio@ELKbiotech.com)

[www.elkbiotech.com](http://www.elkbiotech.com)

23-2, No.388 Gaoxin 2nd Road, Wuhan East Lake Hi-tech Development Zone, Hubei, P.R.C.