



Stat2 (phospho Tyr690) rabbit pAb

Cat No.:ES1478

For research use only

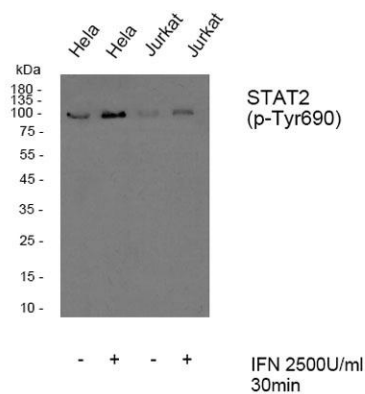
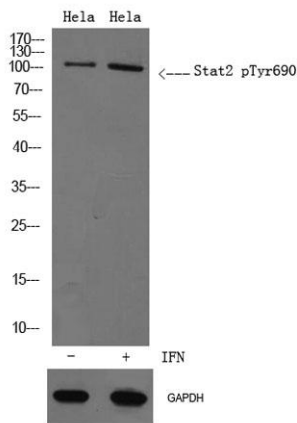
Overview

Product Name	Stat2 (phospho Tyr690) rabbit pAb
Host species	Rabbit
Applications	WB;IHC;IF;ELISA
Species Cross-Reactivity	Human;Rat
Recommended dilutions	Western Blot: 1/500 - 1/2000. Immunohistochemistry: 1/100 - 1/300. ELISA: 1/20000. Not yet tested in other applications.
Immunogen	The antiserum was produced against synthesized peptide derived from human STAT2 around the phosphorylation site of Tyr690. AA range:656-705
Specificity	Phospho-Stat2 (Y690) Polyclonal Antibody detects endogenous levels of Stat2 protein only when phosphorylated at Y690.
Formulation	Liquid in PBS containing 50% glycerol, 0.5% BSA and 0.02% sodium azide.
Storage	Store at -20°C. Avoid repeated freeze-thaw cycles.
Protein Name	Signal transducer and activator of transcription 2
Gene Name	STAT2
Cellular localization	Cytoplasm . Nucleus . Translocated into the nucleus upon activation by IFN-alpha/beta. .
Purification	The antibody was affinity-purified from rabbit antiserum by affinity-chromatography using epitope-specific immunogen.
Clonality	Polyclonal
Concentration	1 mg/ml
Observed band	113kD
Human Gene ID	6773
Human Swiss-Prot Number	P52630
Alternative Names	STAT2; Signal transducer and activator of transcription 2; p113
Background	The protein encoded by this gene is a member of the STAT protein family. In response to cytokines and growth factors, STAT family members are





phosphorylated by the receptor associated kinases, and then form homo- or heterodimers that translocate to the cell nucleus where they act as transcription activators. In response to interferon (IFN), this protein forms a complex with STAT1 and IFN regulatory factor family protein p48 (ISGF3G), in which this protein acts as a transactivator, but lacks the ability to bind DNA directly. Transcription adaptor P300/CBP (EP300/CREBBP) has been shown to interact specifically with this protein, which is thought to be involved in the process of blocking IFN-alpha response by adenovirus. Multiple transcript variants encoding different isoforms have been found for this gene. [provided by RefSeq, Mar 2010],

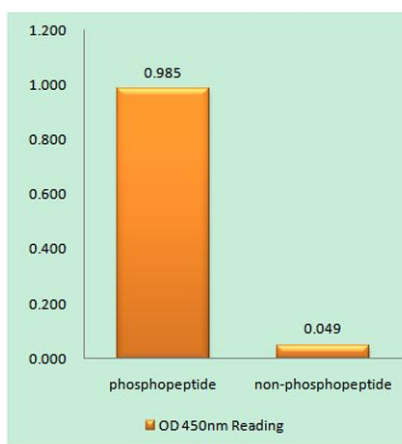




ELK Biotechnology



Western Blot analysis of various cells using Phospho-Stat2 (Y690) Polyclonal Antibody



Enzyme-Linked Immunosorbent Assay (Phospho-ELISA) for Immunogen Phosphopeptide (Phospho-left) and Non-Phosphopeptide (Phospho-right), using STAT2 (Phospho-Tyr690) Antibody



+86-27-59760950

ELKbio@ELKbiotech.com

www.elkbiotech.com

23-2, No.388 Gaoxin 2nd Road, Wuhan East Lake Hi-tech Development Zone, Hubei, P.R.C