



# PLC $\beta$ 3 (phospho Ser1105) rabbit pAb

Cat No.:ES1475

For research use only

## Overview

|                                 |  |
|---------------------------------|--|
| <b>Product Name</b>             | PLC $\beta$ 3 (phospho Ser1105) rabbit pAb   |
| <b>Host species</b>             | Rabbit   |
| <b>Applications</b>             | WB;IHC;IF;ELISA  |
| <b>Species Cross-Reactivity</b> | Human;Mouse;Rat  |
| <b>Recommended dilutions</b>    | Western Blot: 1/500 - 1/2000.<br>Immunohistochemistry: 1/100 - 1/300. ELISA:<br>1/10000. Not yet tested in other applications.                 |
| <b>Immunogen</b>                | The antiserum was produced against synthesized peptide derived from human PLCB3 around the phosphorylation site of Ser1105. AA range:1071-1120 |
| <b>Specificity</b>              | Phospho-PLC $\beta$ 3 (S1105) Polyclonal Antibody detects endogenous levels of PLC $\beta$ 3 protein only when phosphorylated at S1105.        |
| <b>Formulation</b>              | Liquid in PBS containing 50% glycerol, 0.5% BSA and 0.02% sodium azide.  |
| <b>Storage</b>                  | Store at -20°C. Avoid repeated freeze-thaw cycles.   |
| <b>Protein Name</b>             | 1-phosphatidylinositol 4,5-bisphosphate phosphodiesterase beta-3   |
| <b>Gene Name</b>                | PLCB3  |
| <b>Cellular localization</b>    | Cytoplasm . Membrane . Nucleus . And particulate fractions. .  |
| <b>Purification</b>             | The antibody was affinity-purified from rabbit antiserum by affinity-chromatography using epitope-specific immunogen.                          |
| <b>Clonality</b>                | Polyclonal   |
| <b>Concentration</b>            | 1 mg/ml  |
| <b>Observed band</b>            | 160kD  |
| <b>Human Gene ID</b>            | 5331   |
| <b>Human Swiss-Prot Number</b>  | Q01970   |
| <b>Alternative Names</b>        | PLCB3; 1-phosphatidylinositol 4; 5-bisphosphate phosphodiesterase beta-3; Phosphoinositide phospholipase C-beta-3; Phospholipase C-beta-3;     |

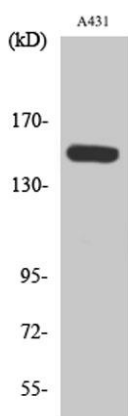




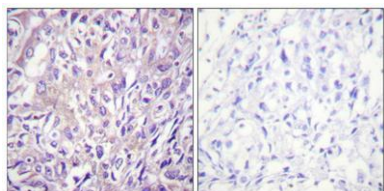
## Background

### PLC-beta-3

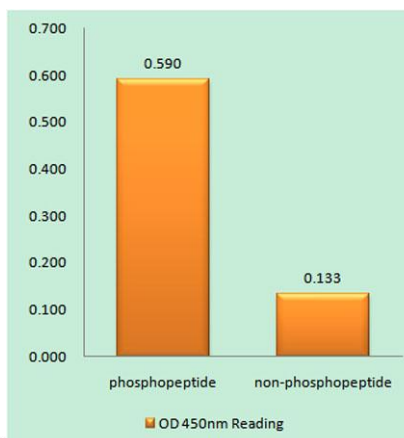
This gene encodes a member of the phosphoinositide phospholipase C beta enzyme family that catalyze the production of the secondary messengers diacylglycerol and inositol 1,4,5-triphosphate from phosphatidylinositol in G-protein-linked receptor-mediated signal transduction. Alternative splicing results in multiple transcript variants.[provided by RefSeq, May 2010],



Western Blot analysis of various cells using Phospho-PLC  $\beta$ 3 (S1105) Polyclonal Antibody diluted at 1:1000



Immunohistochemical analysis of paraffin-embedded Human breast cancer. Antibody was diluted at 1:100(4<sup>o</sup> overnight). High-pressure and temperature Tris-EDTA,pH8.0 was used for antigen retrieval. Negative contrl (right) obtained from antibody was pre-absorbed by immunogen peptide.



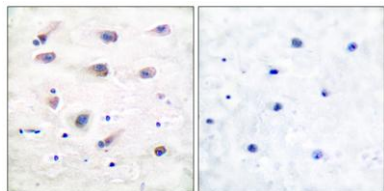
Enzyme-Linked Immunosorbent Assay (Phospho-ELISA) for Immunogen Phosphopeptide (Phospho-left) and Non-Phosphopeptide (Phospho-right), using PLCB3 (Phospho-Ser1105) Antibody





**ELK Biotechnology**

Immunohistochemistry analysis of paraffin-embedded human brain, using PLCB3 (Phospho-Ser1105) Antibody. The picture on the right is blocked with the phospho peptide.



+86-27-59760950

[ELKbio@ELKbiotech.com](mailto:ELKbio@ELKbiotech.com)

[www.elkbiotech.com](http://www.elkbiotech.com)

23-2, No.388 Gaoxin 2nd Road, Wuhan East Lake Hi-tech Development Zone, Hubei, P.R.C