



GABAA R β 1 (phospho Ser434) rabbit pAb

Cat No.:ES1452

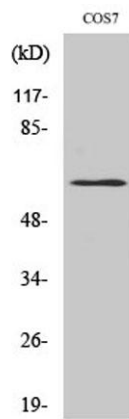
For research use only

Overview

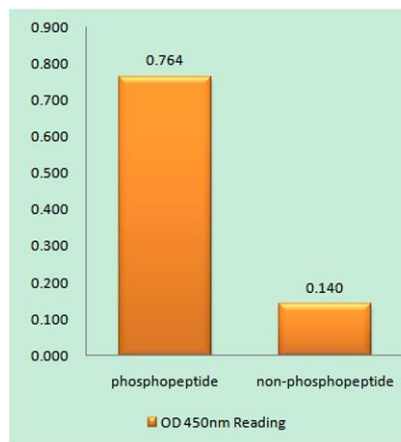
Product Name	GABAA R β 1 (phospho Ser434) rabbit pAb
Host species	Rabbit
Applications	WB;IHC;IF;ELISA
Species Cross-Reactivity	Human;Mouse;Rat;Monkey
Recommended dilutions	Western Blot: 1/500 - 1/2000. Immunohistochemistry: 1/100 - 1/300. ELISA: 1/40000. Not yet tested in other applications.
Immunogen	The antiserum was produced against synthesized peptide derived from human GABA-RB around the phosphorylation site of Ser434. AA range:401-450
Specificity	Phospho-GABAA R β 1 (S434) Polyclonal Antibody detects endogenous levels of GABAA R β 1 protein only when phosphorylated at S434.
Formulation	Liquid in PBS containing 50% glycerol, 0.5% BSA and 0.02% sodium azide.
Storage	Store at -20°C. Avoid repeated freeze-thaw cycles.
Protein Name	Gamma-aminobutyric acid receptor subunit beta-1
Gene Name	GABRB1
Cellular localization	Cell junction, synapse, postsynaptic cell membrane ; Multi-pass membrane protein . Cell membrane ; Multi-pass membrane protein .
Purification	The antibody was affinity-purified from rabbit antiserum by affinity-chromatography using epitope-specific immunogen.
Clonality	Polyclonal
Concentration	1 mg/ml
Observed band	55kD
Human Gene ID	2560
Human Swiss-Prot Number	P18505
Alternative Names	GABRB1; Gamma-aminobutyric acid receptor subunit beta-1; GABA(A) receptor subunit beta-1
Background	The gamma-aminobutyric acid (GABA) A receptor is a multisubunit chloride channel that mediates the



fastest inhibitory synaptic transmission in the central nervous system. This gene encodes GABA A receptor, beta 1 subunit. It is mapped to chromosome 4p12 in a cluster comprised of genes encoding alpha 4, alpha 2 and gamma 1 subunits of the GABA A receptor. Alteration of this gene is implicated in the pathogenetics of schizophrenia. [provided by RefSeq, Jul 2008],

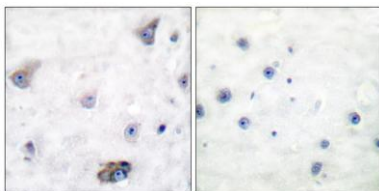


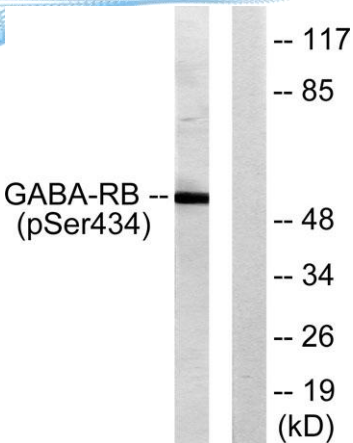
Western Blot analysis of various cells using Phospho-GABAA R β 1 (S434) Polyclonal Antibody



Enzyme-Linked Immunosorbent Assay (Phospho-ELISA) for Immunogen Phosphopeptide (Phospho-left) and Non-Phosphopeptide (Phospho-right), using GABA-RB (Phospho-Ser434) Antibody

Immunohistochemistry analysis of paraffin-embedded human brain, using GABA-RB (Phospho-Ser434) Antibody. The picture on the right is blocked with the phospho peptide.





Western blot analysis of lysates from COS7 cells, using GABA-RB (Phospho-Ser434) Antibody. The lane on the right is blocked with the phospho peptide.

