



Ephrin-B1/2 (phospho Tyr330) rabbit pAb

Cat No.:ES1419

For research use only

Overview

Product Name	Ephrin-B1/2 (phospho Tyr330) rabbit pAb
Host species	Rabbit
Applications	WB;ELISA
Species Cross-Reactivity	Human;Mouse;Rat
Recommended dilutions	Western Blot: 1/500 - 1/2000. ELISA: 1/40000. Not yet tested in other applications.
Immunogen	The antiserum was produced against synthesized peptide derived from human EFNB1/2 around the phosphorylation site of Tyr330. AA range:284-333
Specificity	Phospho-Ephrin-B1/2 (Y330) Polyclonal Antibody detects endogenous levels of Ephrin-B1/2 protein only when phosphorylated at Y330.
Formulation	Liquid in PBS containing 50% glycerol, 0.5% BSA and 0.02% sodium azide.
Storage	Store at -20°C. Avoid repeated freeze-thaw cycles.
Protein Name	Ephrin-B1/Ephrin-B2
Gene Name	EFNB1/EFNB2
Cellular localization	Cell membrane ; Single-pass type I membrane protein . Membrane raft . May recruit GRIP1 and GRIP2 to membrane raft domains. . ; [Ephrin-B1 C-terminal fragment]: Cell membrane ; Single-pass type I membrane protein . ; [Ephrin-B1 intracellular domain]: Nucleu
Purification	The antibody was affinity-purified from rabbit antiserum by affinity-chromatography using epitope-specific immunogen.
Clonality	Polyclonal
Concentration	1 mg/ml
Observed band	59kD
Human Gene ID	1947/1948
Human Swiss-Prot Number	P98172/P52799
Alternative Names	EFNB1; EFL3; EPLG2; LERK2; Ephrin-B1; EFL-3; ELK ligand; ELK-L; EPH-related receptor tyrosine kinase

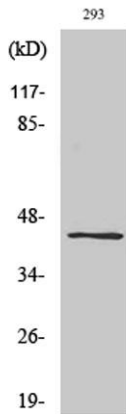




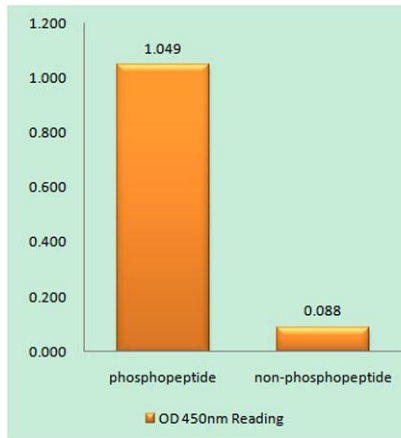
Background

ligand 2; LERK-2; EFNB2; EPLG5; HTKL; LERK5; Ephrin-B2; EPH-related receptor tyrosine kinase ligand 5; LERK-5; HTK ligand; HTK-L

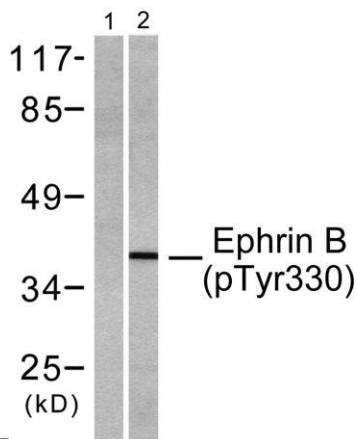
The protein encoded by this gene is a type I membrane protein and a ligand of Eph-related receptor tyrosine kinases. It may play a role in cell adhesion and function in the development or maintenance of the nervous system. [provided by RefSeq, Jul 2008],



Western Blot analysis of various cells using Phospho-Ephrin-B1/2 (Y330) Polyclonal Antibody



Enzyme-Linked Immunosorbent Assay (Phospho-ELISA) for Immunogen Phosphopeptide (Phospho-left) and Non-Phosphopeptide (Phospho-right), using EFNB1/2 (Phospho-Tyr330) Antibody



Western blot analysis of lysates from 293 cells treated with TNF-a 20ng/ml 30', using EFNB1/2 (Phospho-Tyr330) Antibody. The lane on the left is blocked with the phospho peptide.





ELK Biotechnology



+86-27-59760950

ELKbio@ELKbiotech.com

www.elkbiotech.com

23-2, No.388 Gaoxin 2nd Road,Wuhan East Lake Hi-tech Development Zone, Hubei , P.R.C