



# Shb (phospho Tyr246) rabbit pAb

Cat No.:ES1402

For research use only

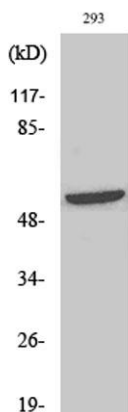
## Overview

|                                 |   |
|---------------------------------|---|
| <b>Product Name</b>             | Shb (phospho Tyr246) rabbit pAb   |
| <b>Host species</b>             | Rabbit  |
| <b>Applications</b>             | WB;IHC  |
| <b>Species Cross-Reactivity</b> | Human;Mouse   |
| <b>Recommended dilutions</b>    | WB 1:500-2000;IHC-p 1:50-300  |
| <b>Immunogen</b>                | Synthesized phospho-peptide around the phosphorylation site of human Shb (phospho Tyr246)   |
| <b>Specificity</b>              | Phospho-Shb (Y246) Polyclonal Antibody detects endogenous levels of Shb protein only when phosphorylated at Y246.   |
| <b>Formulation</b>              | Liquid in PBS containing 50% glycerol, 0.5% BSA and 0.02% sodium azide.   |
| <b>Storage</b>                  | Store at -20°C. Avoid repeated freeze-thaw cycles.  |
| <b>Protein Name</b>             | SH2 domain-containing adapter protein B   |
| <b>Gene Name</b>                | SHB   |
| <b>Cellular localization</b>    | Cytoplasm. Cell membrane; Peripheral membrane protein; Cytoplasmic side. Associates with membrane lipid rafts upon TCR stimulation.   |
| <b>Purification</b>             | The antibody was affinity-purified from rabbit antiserum by affinity-chromatography using epitope-specific immunogen.   |
| <b>Clonality</b>                | Polyclonal  |
| <b>Concentration</b>            | 1 mg/ml   |
| <b>Observed band</b>            | 55kD  |
| <b>Human Gene ID</b>            | 6461  |
| <b>Human Swiss-Prot Number</b>  | Q15464  |
| <b>Alternative Names</b>        | SHB; SH2 domain-containing adapter protein B  |
| <b>Background</b>               | domain:The SH2 domain preferentially binds phosphopeptides with the consensus sequence Y-[TVI]-X-L and mediates interaction with PDGFRA, PDGFRB, FGRFR1, IL2RB, IL2RG, CD3Z and CRK/CrKII.,function:Adapter protein which regulates |



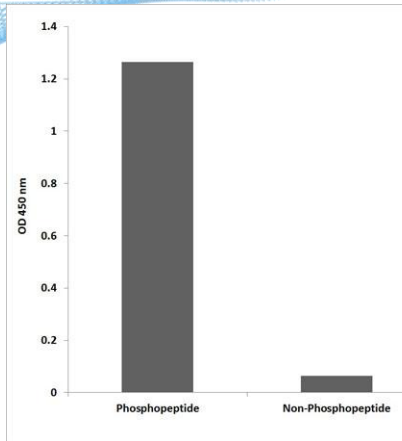


several signal transduction cascades by linking activated receptors to downstream signaling components. May play a role in angiogenesis by regulating FGFR1, VEGFR2 and PDGFR signaling. May also play a role in T-cell antigen receptor/TCR signaling, interleukin-2 signaling, apoptosis and neuronal cells differentiation by mediating basic-FGF and NGF-induced signaling cascades. May also regulate IRS1 and IRS2 signaling in insulin-producing cells.,PTM:Phosphorylated upon PDGFRA, PDGFRB, TCR, IL2 receptor, FGRF1 or VEGFR2 activation.,similarity:Contains 1 SH2 domain.,subcellular location:Associates with membrane lipid rafts upon TCR stimulation.,subunit:Interacts with PTPN11 (By similarity). Interacts with phosphorylated 'Tyr-720' of the ligand-activated receptor PDGFRA via its SH2 domain. Interacts with the ligand-activated receptors PDGFRB, FGFR1, KDR/VEGFR2, IL2RB and IL2RG. Interacts with EPS8 and V-SRC. Interacts with GRB2 and GRAP. Interacts with CD3Z. Interacts with tyrosine-phosphorylated LAT upon T-cell antigen receptor activation. Interacts with PLCG1. Interacts with ZAP70, LCP2/SLP-76, VAV1 and GRAP2. Interacts with JAK1 and JAK3. Interacts with PTK2/FAK1. Interacts with CRK/CrKII. Interacts with IRS2.,tissue specificity:Widely expressed.,

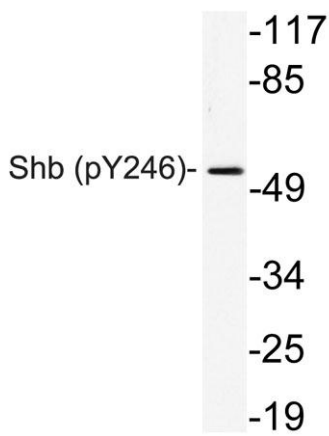


Western Blot analysis of various cells using Phospho-Shb (Y246) Polyclonal Antibody

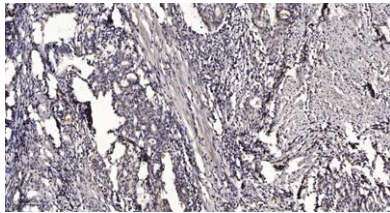




Enzyme-Linked Immunosorbent Assay (Phospho-ELISA) for Immunogen Phosphopeptide (Phospho-left) and Non-Phosphopeptide (Phospho-right), using Shb (Phospho-Tyr246) Antibody



Western blot analysis of lysate from 293 cells, using phospho-Serhb (Phospho-Tyr246) antibody.



Immunohistochemical analysis of paraffin-embedded human Gastric adenocarcinoma. 1, Antibody was diluted at 1:200(4° overnight). 2, Tris-EDTA,pH9.0 was used for antigen retrieval. 3,Secondary antibody was diluted at 1:200(room temperature, 45min).

