



PKC ζ (phospho Thr410) rabbit pAb

Cat No.:ES1395

For research use only

Overview

Product Name	PKC ζ (phospho Thr410) rabbit pAb
Host species	Rabbit
Applications	WB;IHC;IF;ELISA
Species Cross-Reactivity	Human;Mouse;Rat
Recommended dilutions	Western Blot: 1/500 - 1/2000. Immunohistochemistry: 1/100 - 1/300. Immunofluorescence: 1/200 - 1/1000. ELISA: 1/20000. Not yet tested in other applications.
Immunogen	The antiserum was produced against synthesized peptide derived from human PKC zeta around the phosphorylation site of Thr410. AA range:376-425
Specificity	Phospho-PKC ζ (T410) Polyclonal Antibody detects endogenous levels of PKC ζ protein only when phosphorylated at T410.
Formulation	Liquid in PBS containing 50% glycerol, 0.5% BSA and 0.02% sodium azide.
Storage	Store at -20°C. Avoid repeated freeze-thaw cycles.
Protein Name	Protein kinase C zeta type
Gene Name	PRKCZ
Cellular localization	Cytoplasm . Endosome . Cell junction . Membrane ; Peripheral membrane protein . In the retina, localizes in the terminals of the rod bipolar cells (By similarity). Associates with endosomes (PubMed:9566925). Presence of KRIT1, CDH5 and RAP1B is required for its localization to the cell junction (PubMed:7597083). Colocalizes with VAMP2 and WDFY2 in intracellular vesicles (PubMed:17313651). Transiently translocates to the membrane of CA1 hippocampal cells in response to the induction of long term potentiation (By similarity). .; [Isoform 2]: Cytoplasm .
Purification	The antibody was affinity-purified from rabbit antiserum by affinity-chromatography using





Clonality

Concentration

Observed band

Human Gene ID

Human Swiss-Prot Number

Alternative Names

Background

epitope-specific immunogen.

Polyclonal

1 mg/ml

70kD

5590

Q05513

PRKCZ; PKC2; Protein kinase C zeta type; nPKC-zeta

Protein kinase C (PKC) zeta is a member of the PKC

family of serine/threonine kinases which are

involved in a variety of cellular processes such as proliferation, differentiation and secretion. Unlike

the classical PKC isoenzymes which are

calcium-dependent, PKC zeta exhibits a kinase

activity which is independent of calcium and

diacylglycerol but not of phosphatidylserine.

Furthermore, it is insensitive to typical PKC

inhibitors and cannot be activated by phorbol ester.

Unlike the classical PKC isoenzymes, it has only a

single zinc finger module. These structural and

biochemical properties indicate that the zeta

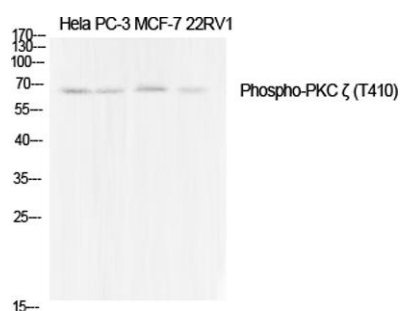
subspecies is related to, but distinct from other

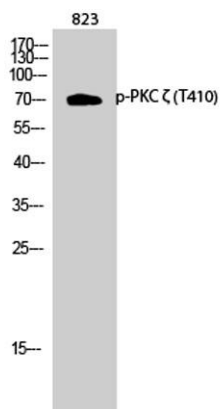
isoenzymes of PKC. Alternative splicing results in

multiple transcript variants encoding different

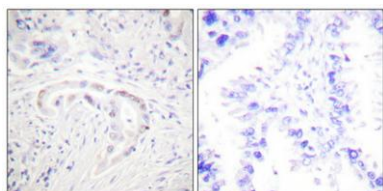
isoforms. [provided by RefSeq, Jul 2008],

Western Blot analysis of various cells using Phospho-PKC ζ (T410) Polyclonal Antibody diluted at 1:1000

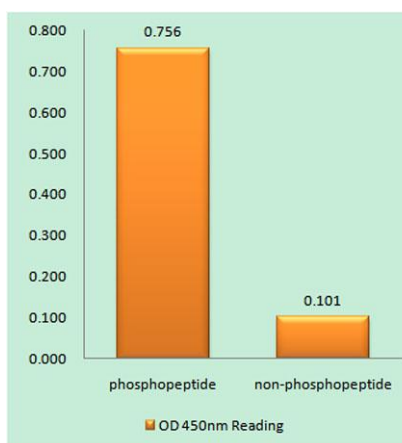




Western Blot analysis of 823 cells using Phospho-PKC ζ (T410) Polyclonal Antibody diluted at 1:1000



Immunohistochemical analysis of paraffin-embedded Human lung cancer. Antibody was diluted at 1:100(4° overnight). High-pressure and temperature Tris-EDTA, pH8.0 was used for antigen retrieval. Negative control (right) obtained from antibody was pre-absorbed



Enzyme-Linked Immunosorbent Assay (Phospho-ELISA) for Immunogen Phosphopeptide (Phospho-left) and Non-Phosphopeptide (Phospho-right), using PKC zeta (Phospho-Thr410) Antibody

