



# Paxillin (phospho Tyr31) rabbit pAb

Cat No.:ES1393

For research use only

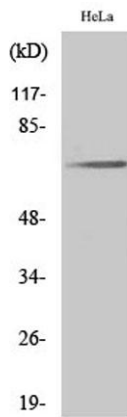
## Overview

<b>Product Name</b>	Paxillin (phospho Tyr31) rabbit pAb
<b>Host species</b>	Rabbit
<b>Applications</b>	WB;IHC;IF;ELISA
<b>Species Cross-Reactivity</b>	Human;Mouse;Rat
<b>Recommended dilutions</b>	Western Blot: 1/500 - 1/2000. Immunohistochemistry: 1/100 - 1/300. ELISA: 1/20000. Not yet tested in other applications.
<b>Immunogen</b>	The antiserum was produced against synthesized peptide derived from human Paxillin around the phosphorylation site of Tyr31. AA range:15-64
<b>Specificity</b>	Phospho-Paxillin (Y31) Polyclonal Antibody detects endogenous levels of Paxillin protein only when phosphorylated at Y31.
<b>Formulation</b>	Liquid in PBS containing 50% glycerol, 0.5% BSA and 0.02% sodium azide.
<b>Storage</b>	Store at -20°C. Avoid repeated freeze-thaw cycles.
<b>Protein Name</b>	Paxillin
<b>Gene Name</b>	PXN
<b>Cellular localization</b>	Cytoplasm, cytoskeleton . Cell junction, focal adhesion . Cytoplasm, cell cortex . Colocalizes with integrins at the cell periphery. Colocalize with PXN to membrane ruffles and the leading edge of migrating cells (PubMed:23128389). .
<b>Purification</b>	The antibody was affinity-purified from rabbit antiserum by affinity-chromatography using epitope-specific immunogen.
<b>Clonality</b>	Polyclonal
<b>Concentration</b>	1 mg/ml
<b>Observed band</b>	68kD
<b>Human Gene ID</b>	5829
<b>Human Swiss-Prot Number</b>	P49023
<b>Alternative Names</b>	PXN; Paxillin
<b>Background</b>	This gene encodes a cytoskeletal protein involved in

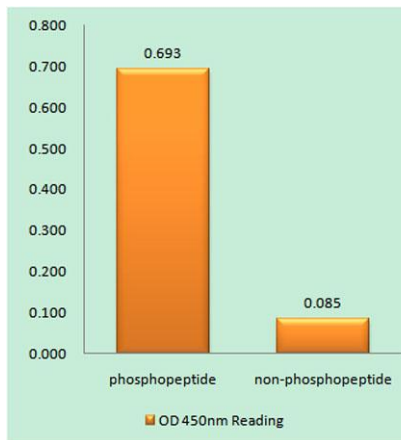




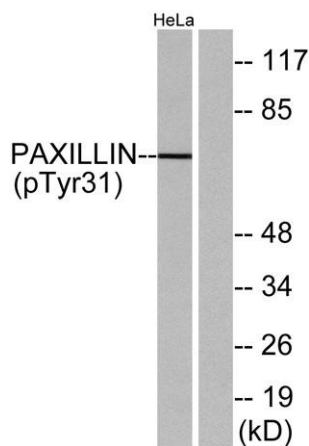
actin-membrane attachment at sites of cell adhesion to the extracellular matrix (focal adhesion). Alternatively spliced transcript variants encoding different isoforms have been described for this gene. These isoforms exhibit different expression pattern, and have different biochemical, as well as physiological properties (PMID:9054445). [provided by RefSeq, Aug 2011],



Western Blot analysis of various cells using Phospho-Paxillin (Y31) Polyclonal Antibody diluted at 1:1000



Enzyme-Linked Immunosorbent Assay (Phospho-ELISA) for Immunogen Phosphopeptide (Phospho-left) and Non-Phosphopeptide (Phospho-right), using Paxillin (Phospho-Tyr31) Antibody

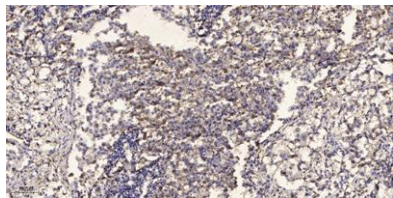


Western blot analysis of lysates from HeLa cells treated with TNF 200ng/ml 2', using Paxillin (Phospho-Tyr31) Antibody. The lane on the right is blocked with the phospho peptide.





**ELK Biotechnology**



Immunohistochemical analysis of paraffin-embedded human Squamous cell carcinoma of lung. 1, Antibody was diluted at 1:200(4° overnight). 2, Tris-EDTA,pH9.0 was used for antigen retrieval. 3,Secondary antibody was diluted at 1:200(room temperature, 45min).



+86-27-59760950

[ELKbio@ELKbiotech.com](mailto:ELKbio@ELKbiotech.com)

[www.elkbiotech.com](http://www.elkbiotech.com)

23-2, No.388 Gaoxin 2nd Road,Wuhan East Lake Hi-tech Development Zone, Hubei , P.R.C