

IRS-1 (phospho Ser794) rabbit pAb

Cat No.:ES1344

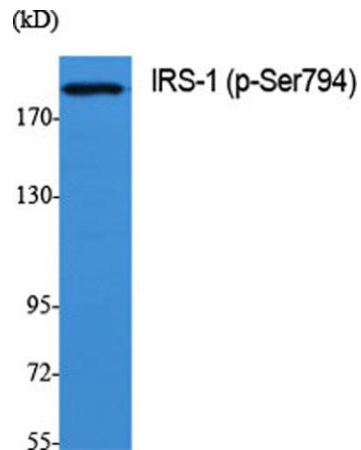
For research use only

Overview

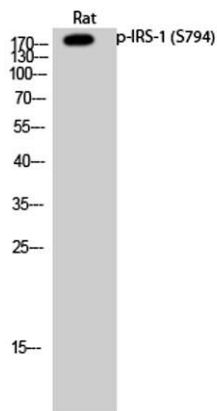
Product Name	IRS-1 (phospho Ser794) rabbit pAb
Host species	Rabbit
Applications	WB;IHC;IF;ELISA
Species Cross-Reactivity	Human;Mouse;Rat
Recommended dilutions	Western Blot: 1/500 - 1/2000. Immunohistochemistry: 1/100 - 1/300. Immunofluorescence: 1/200 - 1/1000. ELISA: 1/40000. Not yet tested in other applications.
Immunogen	The antiserum was produced against synthesized peptide derived from human IRS-1 around the phosphorylation site of Ser794. AA range:760-809
Specificity	Phospho-IRS-1 (S794) Polyclonal Antibody detects endogenous levels of IRS-1 protein only when phosphorylated at S794.
Formulation	Liquid in PBS containing 50% glycerol, 0.5% BSA and 0.02% sodium azide.
Storage	Store at -20°C. Avoid repeated freeze-thaw cycles.
Protein Name	Insulin receptor substrate 1
Gene Name	IRS1
Cellular localization	nucleus,cytoplasm,cytosol,plasma membrane,insulin receptor complex,caveola,intracellular membrane-bounded organelle,
Purification	The antibody was affinity-purified from rabbit antiserum by affinity-chromatography using epitope-specific immunogen.
Clonality	Polyclonal
Concentration	1 mg/ml
Observed band	170kD
Human Gene ID	3667
Human Swiss-Prot Number	P35568
Alternative Names	IRS1; Insulin receptor substrate 1; IRS-1
Background	This gene encodes a protein which is



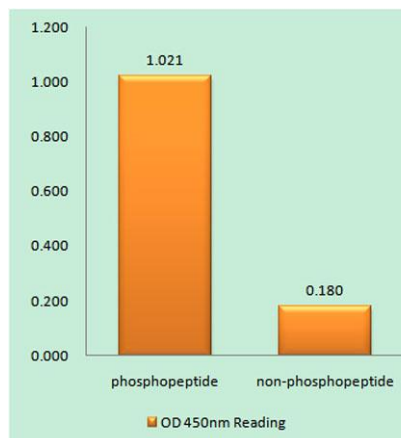
phosphorylated by insulin receptor tyrosine kinase. Mutations in this gene are associated with type II diabetes and susceptibility to insulin resistance. [provided by RefSeq, Nov 2009],



Western Blot analysis of various cells using Phospho-IRS-1 (S794) Polyclonal Antibody diluted at 1:500



Western Blot analysis of Rat cells using Phospho-IRS-1 (S794) Polyclonal Antibody diluted at 1:500



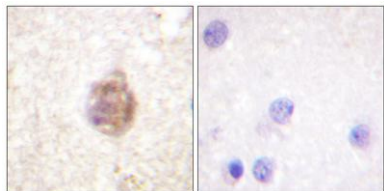
Enzyme-Linked Immunosorbent Assay (Phospho-ELISA) for Immunogen Phosphopeptide (Phospho-left) and Non-Phosphopeptide (Phospho-right), using IRS-1 (Phospho-Ser794) Antibody





ELK Biotechnology

Immunohistochemistry analysis of paraffin-embedded human brain, using IRS-1 (Phospho-Ser794) Antibody. The picture on the right is blocked with the phospho peptide.



+86-27-59760950

ELKbio@ELKbiotech.com

www.elkbiotech.com

23-2, No.388 Gaoxin 2nd Road,Wuhan East Lake Hi-tech Development Zone, Hubei , P.R.C