

# IRS-1 (phospho Ser639) rabbit pAb

Cat No.:ES1343

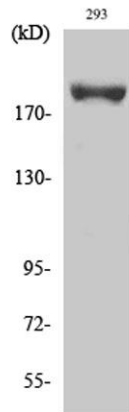
For research use only

## Overview

Product Name	IRS-1 (phospho Ser639) rabbit pAb
Host species	Rabbit
Applications	WB;IHC;IF;ELISA
Species Cross-Reactivity	Human;Mouse;Rat
Recommended dilutions	Western Blot: 1/500 - 1/2000. Immunohistochemistry: 1/100 - 1/300. ELISA: 1/20000. Not yet tested in other applications.
Immunogen	The antiserum was produced against synthesized peptide derived from human IRS-1 around the phosphorylation site of Ser639. AA range:605-654
Specificity	Phospho-IRS-1 (S639) Polyclonal Antibody detects endogenous levels of IRS-1 protein only when phosphorylated at S639.
Formulation	Liquid in PBS containing 50% glycerol, 0.5% BSA and 0.02% sodium azide.
Storage	Store at -20°C. Avoid repeated freeze-thaw cycles.
Protein Name	Insulin receptor substrate 1
Gene Name	IRS1
Cellular localization	nucleus,cytoplasm,cytosol,plasma membrane,insulin receptor complex,caveola,intracellular membrane-bounded organelle,
Purification	The antibody was affinity-purified from rabbit antiserum by affinity-chromatography using epitope-specific immunogen.
Clonality	Polyclonal
Concentration	1 mg/ml
Observed band	170kD
Human Gene ID	3667
Human Swiss-Prot Number	P35568
Alternative Names	IRS1; Insulin receptor substrate 1; IRS-1
Background	This gene encodes a protein which is phosphorylated by insulin receptor tyrosine kinase.



Mutations in this gene are associated with type II diabetes and susceptibility to insulin resistance.  
[provided by RefSeq, Nov 2009],



Western Blot analysis of various cells using Phospho-IRS-1 (S639) Polyclonal Antibody diluted at 1:500

Immunohistochemistry analysis of paraffin-embedded human breast carcinoma, using IRS-1 (Phospho-Ser639) Antibody. The picture on the right is blocked with the phospho peptide.

