



# IRS-1 (phospho Ser307) rabbit pAb

Cat No.:ES1341

For research use only

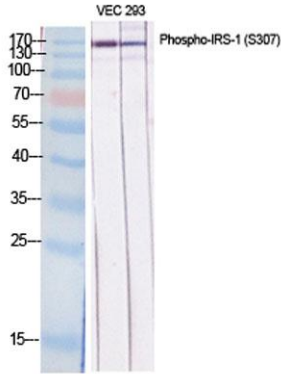
## Overview

<b>Product Name</b>	IRS-1 (phospho Ser307) rabbit pAb
<b>Host species</b>	Rabbit
<b>Applications</b>	WB;IHC;IF;ELISA
<b>Species Cross-Reactivity</b>	Human;Mouse;Rat
<b>Recommended dilutions</b>	Western Blot: 1/500 - 1/2000. Immunohistochemistry: 1/100 - 1/300. Immunofluorescence: 1/200 - 1/1000. ELISA: 1/10000. Not yet tested in other applications.
<b>Immunogen</b>	The antiserum was produced against synthesized peptide derived from human IRS-1 around the phosphorylation site of Ser307. AA range:274-323
<b>Specificity</b>	Phospho-IRS-1 (S307) Polyclonal Antibody detects endogenous levels of IRS-1 protein only when phosphorylated at S307.
<b>Formulation</b>	Liquid in PBS containing 50% glycerol, 0.5% BSA and 0.02% sodium azide.
<b>Storage</b>	Store at -20°C. Avoid repeated freeze-thaw cycles.
<b>Protein Name</b>	Insulin receptor substrate 1
<b>Gene Name</b>	IRS1
<b>Cellular localization</b>	nucleus,cytoplasm,cytosol,plasma membrane,insulin receptor complex,caveola,intracellular membrane-bounded organelle,
<b>Purification</b>	The antibody was affinity-purified from rabbit antiserum by affinity-chromatography using epitope-specific immunogen.
<b>Clonality</b>	Polyclonal
<b>Concentration</b>	1 mg/ml
<b>Observed band</b>	170kD
<b>Human Gene ID</b>	3667
<b>Human Swiss-Prot Number</b>	P35568
<b>Alternative Names</b>	IRS1; Insulin receptor substrate 1; IRS-1
<b>Background</b>	This gene encodes a protein which is

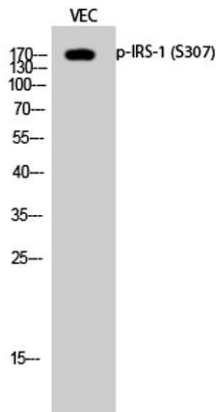


phosphorylated by insulin receptor tyrosine kinase. Mutations in this gene are associated with type II diabetes and susceptibility to insulin resistance. [provided by RefSeq, Nov 2009],

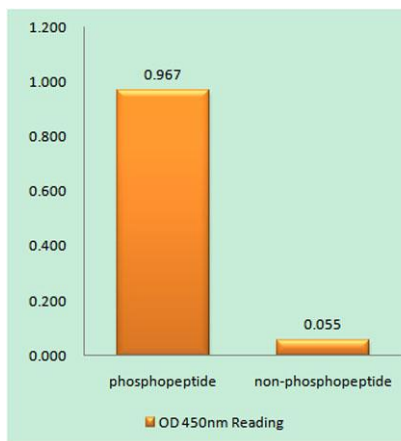
Western Blot analysis of various cells using Phospho-IRS-1 (S307) Polyclonal Antibody diluted at 1:1000



Western Blot analysis of VEC cells using Phospho-IRS-1 (S307) Polyclonal Antibody diluted at 1:1000



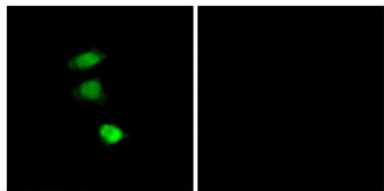
Enzyme-Linked Immunosorbent Assay (Phospho-ELISA) for Immunogen Phosphopeptide (Phospho-left) and Non-Phosphopeptide (Phospho-right), using IRS-1 (Phospho-Ser307) Antibody





**ELK Biotechnology**

Immunofluorescence analysis of COS7 cells, using IRS-1 (Phospho-Ser307) Antibody. The picture on the right is blocked with the phospho peptide.



+86-27-59760950

[ELKbio@ELKbiotech.com](mailto:ELKbio@ELKbiotech.com)

[www.elkbiotech.com](http://www.elkbiotech.com)

23-2, No.388 Gaoxin 2nd Road, Wuhan East Lake Hi-tech Development Zone, Hubei, P.R.C