



IKK α / β (phospho Ser180/181) rabbit pAb

Cat No.:ES1337

For research use only

Overview

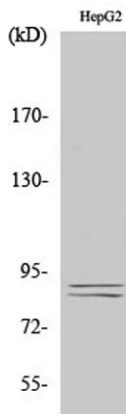
Product Name	IKK α / β (phospho Ser180/181) rabbit pAb
Host species	Rabbit
Applications	WB;IHC;IF;ELISA
Species Cross-Reactivity	Human;Mouse;Rat
Recommended dilutions	Western Blot: 1/500 - 1/2000. Immunohistochemistry: 1/100 - 1/300. ELISA: 1/20000. Not yet tested in other applications.
Immunogen	The antiserum was produced against synthesized peptide derived from human IKK-alpha/beta around the phosphorylation site of Ser180/181. AA range:151-200
Specificity	Phospho-IKK α / β (S180/181) Polyclonal Antibody detects endogenous levels of IKK α / β protein only when phosphorylated at S180/181.
Formulation	Liquid in PBS containing 50% glycerol, 0.5% BSA and 0.02% sodium azide.
Storage	Store at -20°C. Avoid repeated freeze-thaw cycles.
Protein Name	Inhibitor of nuclear factor kappa-B kinase subunit alpha
Gene Name	CHUK/IKBK β
Cellular localization	Cytoplasm . Nucleus . Shuttles between the cytoplasm and the nucleus.
Purification	The antibody was affinity-purified from rabbit antiserum by affinity-chromatography using epitope-specific immunogen.
Clonality	Polyclonal
Concentration	1 mg/ml
Observed band	85kD
Human Gene ID	1147/3551
Human Swiss-Prot Number	O15111/O14920
Alternative Names	CHUK; IKKA; TCF16; Inhibitor of nuclear factor kappa-B kinase subunit alpha; I-kappa-B kinase alpha; IKK-A; IKK-alpha; Ikbka; Ikbpa; Ikbkba; Ikbkba kinase;



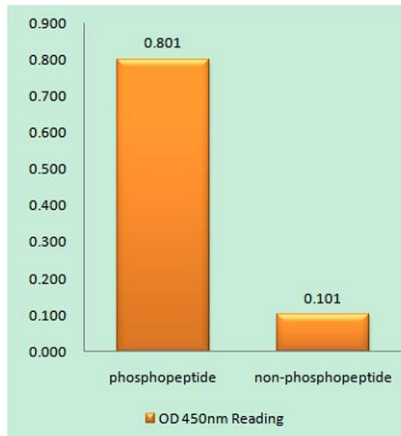


Background

Conserved helix-loop-helix ubiquitous kinase; I-kappa-B kinase 1; IKK1; Nuclear factor NF-kappa-B This gene encodes a member of the serine/threonine protein kinase family. The encoded protein, a component of a cytokine-activated protein complex that is an inhibitor of the essential transcription factor NF-kappa-B complex, phosphorylates sites that trigger the degradation of the inhibitor via the ubiquination pathway, thereby activating the transcription factor. [provided by RefSeq, Jul 2008],



Western Blot analysis of various cells using Phospho-IKK α/β (S180/181) Polyclonal Antibody diluted at 1:1000

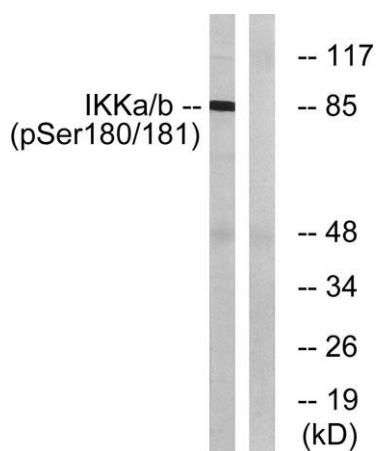
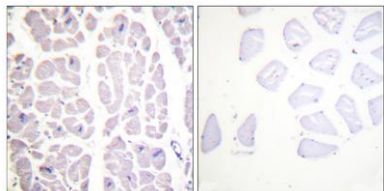


Enzyme-Linked Immunosorbent Assay (Phospho-ELISA) for Immunogen Phosphopeptide (Phospho-left) and Non-Phosphopeptide (Phospho-right), using IKK-alpha/beta (Phospho-Ser180/181) Antibody





Immunohistochemistry analysis of paraffin-embedded human heart, using IKK-alpha/beta (Phospho-Ser180/181) Antibody. The picture on the right is blocked with the phospho peptide.



Western blot analysis of lysates from HepG2 cells treated with TNF 20ng/ml 5', using IKK-alpha/beta (Phospho-Ser180/181) Antibody. The lane on the right is blocked with the phospho peptide.

