



IGF-IR (phospho Tyr1165/Y1166) rabbit pAb

Cat No.:ES1335

For research use only

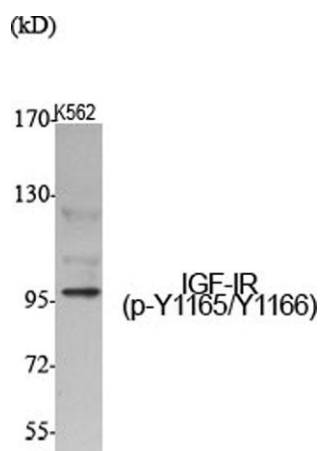
Overview

Product Name	IGF-IR (phospho Tyr1165/Y1166) rabbit pAb
Host species	Rabbit
Applications	WB;ELISA
Species Cross-Reactivity	Human;Mouse;Rat;Monkey
Recommended dilutions	Western Blot: 1/500 - 1/2000. ELISA: 1/20000. Not yet tested in other applications.
Immunogen	The antiserum was produced against synthesized peptide derived from human IGF1R around the phosphorylation site of Tyr1165/Tyr1166. AA range:1131-1180
Specificity	Phospho-IGF-IR (Y1165/Y1166) Polyclonal Antibody detects endogenous levels of IGF-IR protein only when phosphorylated at Y1165/Y1166.
Formulation	Liquid in PBS containing 50% glycerol, 0.5% BSA and 0.02% sodium azide.
Storage	Store at -20°C. Avoid repeated freeze-thaw cycles.
Protein Name	Insulin-like growth factor 1 receptor
Gene Name	IGF1R
Cellular localization	Cell membrane ; Single-pass type I membrane protein .
Purification	The antibody was affinity-purified from rabbit antiserum by affinity-chromatography using epitope-specific immunogen.
Clonality	Polyclonal
Concentration	1 mg/ml
Observed band	pro: 155kD, recetor beta: 95kD
Human Gene ID	3480
Human Swiss-Prot Number	P08069
Alternative Names	IGF1R; Insulin-like growth factor 1 receptor; Insulin-like growth factor I receptor; IGF-I receptor; CD antigen CD221
Background	This receptor binds insulin-like growth factor with a high affinity. It has tyrosine kinase activity. The

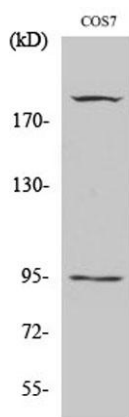




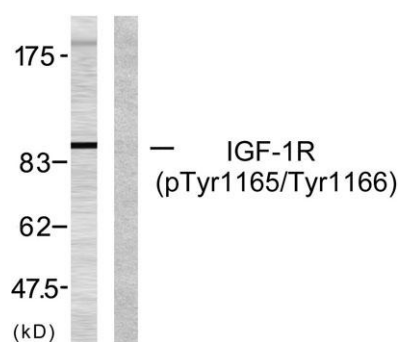
insulin-like growth factor I receptor plays a critical role in transformation events. Cleavage of the precursor generates alpha and beta subunits. It is highly overexpressed in most malignant tissues where it functions as an anti-apoptotic agent by enhancing cell survival. Alternatively spliced transcript variants encoding distinct isoforms have been found for this gene. [provided by RefSeq, May 2014],



Western Blot analysis of various cells using Phospho-IGF-IR (Y1165/Y1166) Polyclonal Antibody diluted at 1:500



Western Blot analysis of COS7 cells using Phospho-IGF-IR (Y1165/Y1166) Polyclonal Antibody diluted at 1:500



Western blot analysis of lysates from 293 cells treated with Insulin, using IGF1R (Phospho-Tyr1165/Tyr1166) Antibody. The lane on the right is blocked with the phospho peptide.





ELK Biotechnology



+86-27-59760950

ELKbio@ELKbiotech.com

www.elkbiotech.com

23-2, No.388 Gaoxin 2nd Road,Wuhan East Lake Hi-tech Development Zone, Hubei , P.R.C