



# ICAM-1 (phospho Tyr512) rabbit pAb

Cat No.:ES1333

For research use only

## Overview

<b>Product Name</b>	ICAM-1 (phospho Tyr512) rabbit pAb
<b>Host species</b>	Rabbit
<b>Applications</b>	WB;ELISA
<b>Species Cross-Reactivity</b>	Human;Rat;Mouse;
<b>Recommended dilutions</b>	Western Blot: 1/500 - 1/2000. ELISA: 1/40000. Not yet tested in other applications.
<b>Immunogen</b>	The antiserum was produced against synthesized peptide derived from human ICAM-1 around the phosphorylation site of Tyr512. AA range:479-528
<b>Specificity</b>	Phospho-ICAM-1 (Y512) Polyclonal Antibody detects endogenous levels of ICAM-1 protein only when phosphorylated at Y512.
<b>Formulation</b>	Liquid in PBS containing 50% glycerol, 0.5% BSA and 0.02% sodium azide.
<b>Storage</b>	Store at -20°C. Avoid repeated freeze-thaw cycles.
<b>Protein Name</b>	Intercellular adhesion molecule 1
<b>Gene Name</b>	ICAM1
<b>Cellular localization</b>	Membrane; Single-pass type I membrane protein.
<b>Purification</b>	The antibody was affinity-purified from rabbit antiserum by affinity-chromatography using epitope-specific immunogen.
<b>Clonality</b>	Polyclonal
<b>Concentration</b>	1 mg/ml
<b>Observed band</b>	57kD
<b>Human Gene ID</b>	3383
<b>Human Swiss-Prot Number</b>	P05362
<b>Alternative Names</b>	ICAM1; Intercellular adhesion molecule 1; ICAM-1; Major group rhinovirus receptor; CD antigen CD54
<b>Background</b>	This gene encodes a cell surface glycoprotein which is typically expressed on endothelial cells and cells of the immune system. It binds to integrins of type CD11a / CD18, or CD11b / CD18 and is also exploited by Rhinovirus as a receptor. [provided by

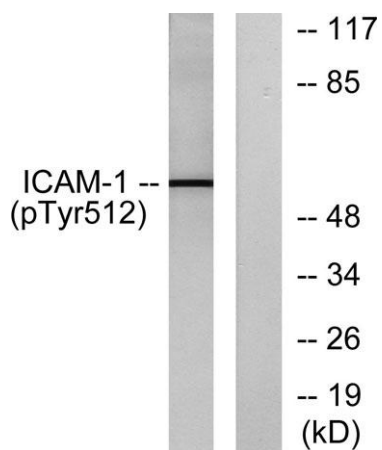




RefSeq, Jul 2008],



Western Blot analysis of various cells using Phospho-ICAM-1 (Y512) Polyclonal Antibody diluted at 1:500



Western blot analysis of lysates from HeLa cells treated with TNF-alpha 20ng/ml 5', using ICAM-1 (Phospho-Tyr512) Antibody. The lane on the right is blocked with the phospho peptide.

