



Hrs (phospho Tyr216) rabbit pAb

Cat No.:ES1329

For research use only

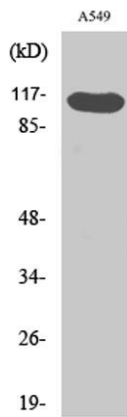
Overview

| | |
|---------------------------------|---|
| Product Name | Hrs (phospho Tyr216) rabbit pAb |
| Host species | Rabbit |
| Applications | WB;ELISA |
| Species Cross-Reactivity | Human;Mouse;Rat |
| Recommended dilutions | Western Blot: 1/500 - 1/2000. ELISA: 1/10000. Not yet tested in other applications. |
| Immunogen | Synthesized phospho-peptide around the phosphorylation site of human Hrs (phospho Tyr216) |
| Specificity | Phospho-Hrs (Y216) Polyclonal Antibody detects endogenous levels of Hrs protein only when phosphorylated at Y216. |
| Formulation | Liquid in PBS containing 50% glycerol, 0.5% BSA and 0.02% sodium azide. |
| Storage | Store at -20°C. Avoid repeated freeze-thaw cycles. |
| Protein Name | Hepatocyte growth factor-regulated tyrosine kinase substrate |
| Gene Name | HGS |
| Cellular localization | Cytoplasm . Early endosome membrane ; Peripheral membrane protein ; Cytoplasmic side . Endosome, multivesicular body membrane ; Peripheral membrane protein . Colocalizes with UBQLN1 in ubiquitin-rich cytoplasmic aggregates that are not endocytic compartme |
| Purification | The antibody was affinity-purified from rabbit antiserum by affinity-chromatography using epitope-specific immunogen. |
| Clonality | Polyclonal |
| Concentration | 1 mg/ml |
| Observed band | 115kD |
| Human Gene ID | 9146 |
| Human Swiss-Prot Number | O14964 |
| Alternative Names | HGS; HRS; Hepatocyte growth factor-regulated |

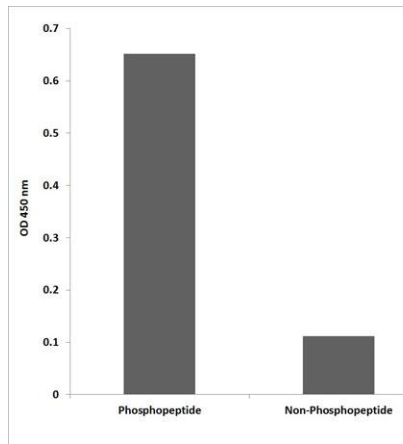


Background

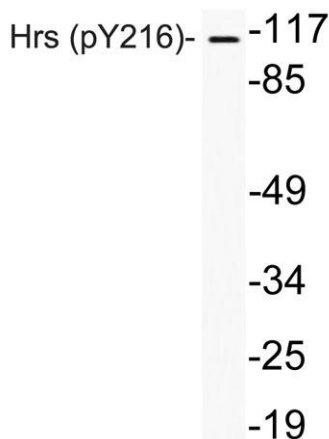
tyrosine kinase substrate; Hrs; Protein pp110
 The protein encoded by this gene regulates endosomal sorting and plays a critical role in the recycling and degradation of membrane receptors. The encoded protein sorts monoubiquitinated membrane proteins into the multivesicular body, targeting these proteins for lysosome-dependent degradation. [provided by RefSeq, Dec 2010],



Western Blot analysis of various cells using Phospho-Hrs (Y216) Polyclonal Antibody



Enzyme-Linked Immunosorbent Assay (Phospho-ELISA) for Immunogen Phosphopeptide (Phospho-left) and Non-Phosphopeptide (Phospho-right), using Hrs (Phospho-Tyr216) Antibody



Western blot analysis of lysates from A549 cells, using phospho-Hrs (Phospho-Tyr216) antibody.

