



G3BP1 (phospho Ser232) rabbit pAb

Cat No.:ES1317

For research use only

Overview

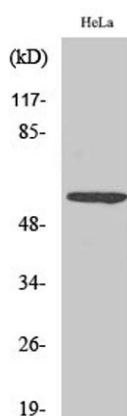
Product Name	G3BP1 (phospho Ser232) rabbit pAb
Host species	Rabbit
Applications	WB;IHC;IF;ELISA
Species Cross-Reactivity	Human;Mouse
Recommended dilutions	Western Blot: 1/500 - 1/2000. Immunohistochemistry: 1/100 - 1/300. ELISA: 1/5000. Not yet tested in other applications.
Immunogen	The antiserum was produced against synthesized peptide derived from human G3BP-1 around the phosphorylation site of Ser232. AA range:216-248
Specificity	Phospho-G3BP1 (S232) Polyclonal Antibody detects endogenous levels of G3BP1 protein only when phosphorylated at S232.
Formulation	Liquid in PBS containing 50% glycerol, 0.5% BSA and 0.02% sodium azide.
Storage	Store at -20°C. Avoid repeated freeze-thaw cycles.
Protein Name	Ras GTPase-activating protein-binding protein 1
Gene Name	G3BP1
Cellular localization	Cytoplasm, cytosol . Perikaryon . Cytoplasm, Stress granule . Nucleus . Cytoplasmic in proliferating cells (PubMed:11604510). Cytosolic and partially nuclear in resting cells (PubMed:11604510). Recruited to stress granules in response to arsenite treatment
Purification	The antibody was affinity-purified from rabbit antiserum by affinity-chromatography using epitope-specific immunogen.
Clonality	Polyclonal
Concentration	1 mg/ml
Observed band	60kD
Human Gene ID	10146
Human Swiss-Prot Number	Q13283
Alternative Names	G3BP1; G3BP; Ras GTPase-activating protein-binding protein 1; G3BP-1; ATP-dependent DNA helicase VIII;





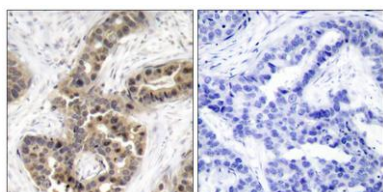
Background

hDH VIII; GAP SH3 domain-binding protein 1
This gene encodes one of the DNA-unwinding enzymes which prefers partially unwound 3'-tailed substrates and can also unwind partial RNA/DNA and RNA/RNA duplexes in an ATP-dependent fashion. This enzyme is a member of the heterogeneous nuclear RNA-binding proteins and is also an element of the Ras signal transduction pathway. It binds specifically to the Ras-GTPase-activating protein by associating with its SH3 domain. Several alternatively spliced transcript variants of this gene have been described, but the full-length nature of some of these variants has not been determined. [provided by RefSeq, Jul 2008],



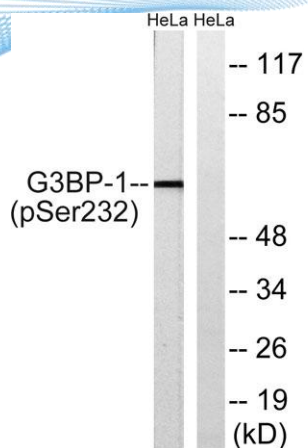
Western Blot analysis of various cells using Phospho-G3BP1 (S232) Polyclonal Antibody

Immunohistochemistry analysis of paraffin-embedded human breast cancer, using G3BP-1 (Phospho-Ser232) Antibody. The picture on the right is blocked with the G3BP-1 (Phospho-Ser232) peptide.





ELK Biotechnology



Western blot analysis of extracts from HeLa cells, using G3BP-1 (Phospho-Ser232) Antibody. The lane on the right is treated with the synthesized peptide.



+86-27-59760950

ELKbio@ELKbiotech.com

www.elkbiotech.com

23-2, No.388 Gaoxin 2nd Road,Wuhan East Lake Hi-tech Development Zone, Hubei , P.R.C