



EGFR (phospho Tyr1110) rabbit pAb

Cat No.:ES1302

For research use only

Overview

Product Name	EGFR (phospho Tyr1110) rabbit pAb
Host species	Rabbit
Applications	WB;ELISA
Species Cross-Reactivity	Human;Mouse;Rat
Recommended dilutions	Western Blot: 1/500 - 1/2000. ELISA: 1/20000. Not yet tested in other applications.
Immunogen	The antiserum was produced against synthesized peptide derived from human EGFR around the phosphorylation site of Tyr1110. AA range:1077-1126
Specificity	Phospho-EGFR (Y1110) Polyclonal Antibody detects endogenous levels of EGFR protein only when phosphorylated at Y1110.
Formulation	Liquid in PBS containing 50% glycerol, 0.5% BSA and 0.02% sodium azide.
Storage	Store at -20°C. Avoid repeated freeze-thaw cycles.
Protein Name	Epidermal growth factor receptor
Gene Name	EGFR
Cellular localization	Cell membrane ; Single-pass type I membrane protein . Endoplasmic reticulum membrane ; Single-pass type I membrane protein. Golgi apparatus membrane; Single-pass type I membrane protein. Nucleus membrane; Single-pass type I membrane protein. Endosome . En
Purification	The antibody was affinity-purified from rabbit antiserum by affinity-chromatography using epitope-specific immunogen.
Clonality	Polyclonal
Concentration	1 mg/ml
Observed band	175kD
Human Gene ID	1956
Human Swiss-Prot Number	P00533
Alternative Names	EGFR; ERBB; ERBB1; HER1; Epidermal growth factor

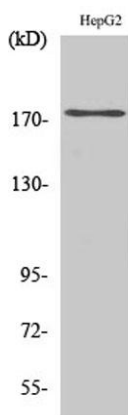




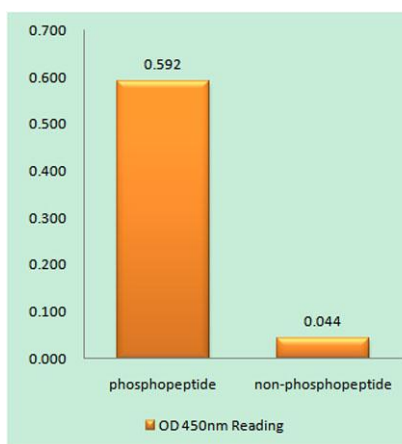
Background

receptor; Proto-oncogene c-ErbB-1; Receptor tyrosine-protein kinase erbB-1

The protein encoded by this gene is a transmembrane glycoprotein that is a member of the protein kinase superfamily. This protein is a receptor for members of the epidermal growth factor family. EGFR is a cell surface protein that binds to epidermal growth factor. Binding of the protein to a ligand induces receptor dimerization and tyrosine autophosphorylation and leads to cell proliferation. Mutations in this gene are associated with lung cancer. [provided by RefSeq, Jun 2016],



Western Blot analysis of various cells using Phospho-EGFR (Y1110) Polyclonal Antibody diluted at 1:500

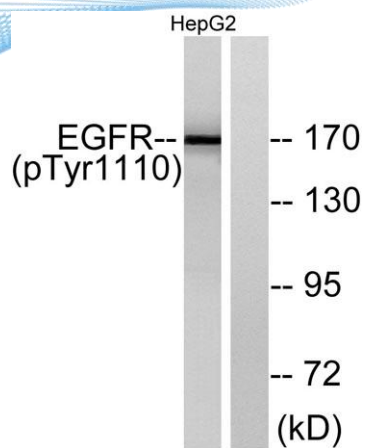


Enzyme-Linked Immunosorbent Assay (Phospho-ELISA) for Immunogen Phosphopeptide (Phospho-left) and Non-Phosphopeptide (Phospho-right), using EGFR (Phospho-Tyr1110) Antibody





ELK Biotechnology



Western blot analysis of lysates from HepG2 cells, using EGFR (Phospho-Tyr1110) Antibody. The lane on the right is blocked with the phospho peptide.



+86-27-59760950

ELKbio@ELKbiotech.com

www.elkbiotech.com

23-2, No.388 Gaoxin 2nd Road,Wuhan East Lake Hi-tech Development Zone, Hubei , P.R.C