



Connexin 43 (phospho Ser368) rabbit pAb

Cat No.:ES1291

For research use only

Overview

Product Name	Connexin 43 (phospho Ser368) rabbit pAb
Host species	Rabbit
Applications	WB;IHC;IF;ELISA
Species Cross-Reactivity	Human;Mouse;Rat
Recommended dilutions	Western Blot: 1/500 - 1/2000. Immunohistochemistry: 1/100 - 1/300. ELISA: 1/20000. Not yet tested in other applications.
Immunogen	The antiserum was produced against synthesized peptide derived from human Connexin 43 around the phosphorylation site of Ser367. AA range:332-381
Specificity	Phospho-Connexin 43 (S368) Polyclonal Antibody detects endogenous levels of Connexin 43 protein only when phosphorylated at S368.
Formulation	Liquid in PBS containing 50% glycerol, 0.5% BSA and 0.02% sodium azide.
Storage	Store at -20°C. Avoid repeated freeze-thaw cycles.
Protein Name	Gap junction alpha-1 protein
Gene Name	GJA1
Cellular localization	Cell membrane ; Multi-pass membrane protein . Cell junction, gap junction . Endoplasmic reticulum . Localizes at the intercalated disk (ICD) in cardiomyocytes and the proper localization at ICD is dependent on TMEM65. .
Purification	The antibody was affinity-purified from rabbit antiserum by affinity-chromatography using epitope-specific immunogen.
Clonality	Polyclonal
Concentration	1 mg/ml
Observed band	43kD
Human Gene ID	2697
Human Swiss-Prot Number	P17302
Alternative Names	GJA1; GJAL; Gap junction alpha-1 protein;

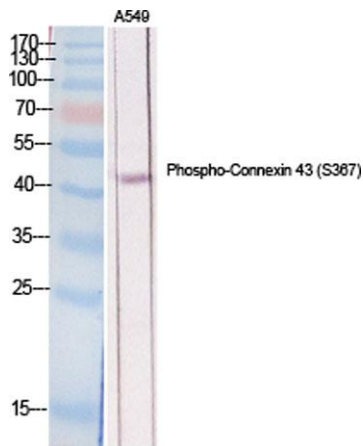




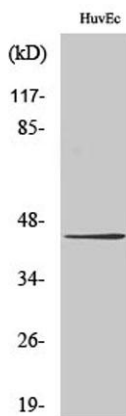
Background

Connexin-43; Cx43; Gap junction 43 kDa heart protein

This gene is a member of the connexin gene family. The encoded protein is a component of gap junctions, which are composed of arrays of intercellular channels that provide a route for the diffusion of low molecular weight materials from cell to cell. The encoded protein is the major protein of gap junctions in the heart that are thought to have a crucial role in the synchronized contraction of the heart and in embryonic development. A related intronless pseudogene has been mapped to chromosome 5. Mutations in this gene have been associated with oculodentodigital dysplasia, autosomal recessive craniometaphyseal dysplasia and heart malformations. [provided by RefSeq, May 2014],



Western Blot analysis of various cells using Phospho-Connexin 43 (S368) Polyclonal Antibody diluted at 1:2000

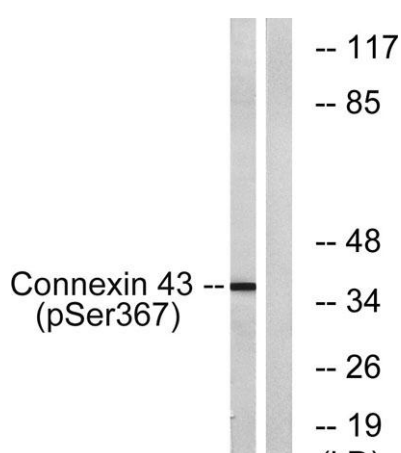
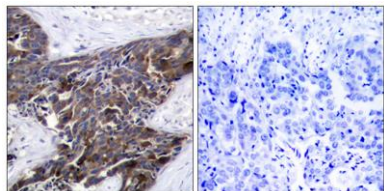


Western Blot analysis of HuvEc cells using Phospho-Connexin 43 (S368) Polyclonal Antibody diluted at 1:2000





Immunohistochemistry analysis of paraffin-embedded human breast carcinoma, using Connexin 43 (Phospho-Ser367) Antibody. The picture on the right is blocked with the phospho peptide.



Western blot analysis of lysates from K562 cells treated with PMA 200ng/ml 10', using Connexin 43 (Phospho-Ser367) Antibody. The lane on the right is blocked with the phospho peptide.

