



MSPD3 rabbit pAb

Cat No.:ES11988

For research use only

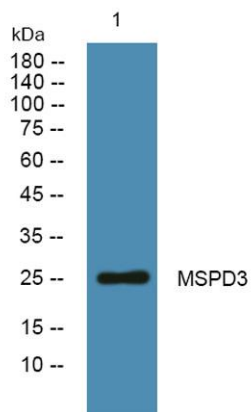
Overview

Product Name	MSPD3 rabbit pAb
Host species	Rabbit
Applications	WB;ELISA
Species Cross-Reactivity	Human;Mouse
Recommended dilutions	WB 1:500-2000 ELISA 1:5000-20000
Immunogen	Synthesized peptide derived from part region of human protein
Specificity	MSPD3 Polyclonal Antibody detects endogenous levels of protein.
Formulation	Liquid in PBS containing 50% glycerol, 0.5% BSA and 0.02% sodium azide.
Storage	Store at -20°C. Avoid repeated freeze-thaw cycles.
Protein Name	Motile sperm domain-containing protein 3
Gene Name	MOSPD3
Cellular localization	Membrane ; Multi-pass membrane protein .
Purification	The antibody was affinity-purified from rabbit antiserum by affinity-chromatography using epitope-specific immunogen.
Clonality	Polyclonal
Concentration	1 mg/ml
Observed band	25kD
Human Gene ID	64598
Human Swiss-Prot Number	O75425
Alternative Names	
Background	This gene encodes a multi-pass membrane protein with a major sperm protein (MSP) domain. The deletion of a similar mouse gene is associated with defective cardiac development and neonatal lethality. Alternate transcriptional splice variants, encoding different isoforms, have been described. [provided by RefSeq, Jul 2008],





ELK Biotechnology



Western blot analysis of lysates from U2OS cells, primary antibody was diluted at 1:1000, 4° over night



+86-27-59760950

ELKbio@ELKbiotech.com

www.elkbiotech.com

23-2, No.388 Gaoxin 2nd Road, Wuhan East Lake Hi-tech Development Zone, Hubei, P.R.C.