



# OGG1 rabbit pAb

Cat No.:ES11984

For research use only

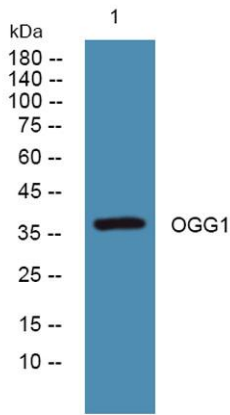
## Overview

<b>Product Name</b>	OGG1 rabbit pAb
<b>Host species</b>	Rabbit
<b>Applications</b>	WB;ELISA
<b>Species Cross-Reactivity</b>	Human;Rat;Mouse;
<b>Recommended dilutions</b>	WB 1:500-2000 ELISA 1:5000-20000
<b>Immunogen</b>	Synthesized peptide derived from part region of human protein
<b>Specificity</b>	OGG1 Polyclonal Antibody detects endogenous levels of protein.
<b>Formulation</b>	Liquid in PBS containing 50% glycerol, 0.5% BSA and 0.02% sodium azide.
<b>Storage</b>	Store at -20°C. Avoid repeated freeze-thaw cycles.
<b>Protein Name</b>	N-glycosylase/DNA lyase [Includes: 8-oxoguanine DNA glycosylase (EC 3.2.2.-); DNA-(apurinic or apyrimidinic site) lyase (AP lyase) (EC 4.2.99.18)]
<b>Gene Name</b>	OGG1 MMH MUTM OGH1
<b>Cellular localization</b>	Nucleus, nucleoplasm . Nucleus speckle . Nucleus matrix . Together with APEX1 is recruited to nuclear speckles in UVA-irradiated cells.; [Isoform 1A]: Nucleus.; [Isoform 2A]: Mitochondrion.
<b>Purification</b>	The antibody was affinity-purified from rabbit antiserum by affinity-chromatography using epitope-specific immunogen.
<b>Clonality</b>	Polyclonal
<b>Concentration</b>	1 mg/ml
<b>Observed band</b>	37kD
<b>Human Gene ID</b>	4968
<b>Human Swiss-Prot Number</b>	O15527
<b>Alternative Names</b>	
<b>Background</b>	This gene encodes the enzyme responsible for the excision of 8-oxoguanine, a mutagenic base byproduct which occurs as a result of exposure to reactive oxygen. The action of this enzyme includes





lyase activity for chain cleavage. Alternative splicing of the C-terminal region of this gene classifies splice variants into two major groups, type 1 and type 2, depending on the last exon of the sequence. Type 1 alternative splice variants end with exon 7 and type 2 end with exon 8. All variants share the N-terminal region in common, which contains a mitochondrial targeting signal that is essential for mitochondrial localization. Many alternative splice variants for this gene have been described, but the full-length nature for every variant has not been determined. [provided by RefSeq, Aug 2008],



Western blot analysis of lysates from SW480 cells, primary antibody was diluted at 1:1000, 4° over night

