



MIEN1 rabbit pAb

Cat No.:ES11950

For research use only

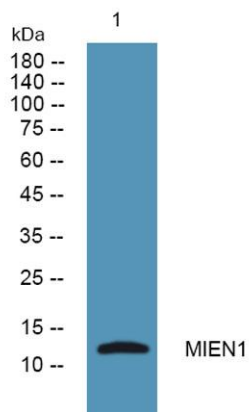
Overview

Product Name	MIEN1 rabbit pAb
Host species	Rabbit
Applications	WB;ELISA
Species Cross-Reactivity	Human;Mouse
Recommended dilutions	WB 1:500-2000 ELISA 1:5000-20000
Immunogen	Synthesized peptide derived from part region of human protein AA range: 1-50
Specificity	MIEN1 Polyclonal Antibody detects endogenous levels of protein.
Formulation	Liquid in PBS containing 50% glycerol, 0.5% BSA and 0.02% sodium azide.
Storage	Store at -20°C. Avoid repeated freeze-thaw cycles.
Protein Name	Migration and invasion enhancer 1 (HBV X-transactivated gene 4 protein) (HBV XAg-transactivated protein 4) (Protein C35)
Gene Name	MIEN1 C17orf37 RDX12 XTP4
Cellular localization	Cytoplasm, cytosol. Cell membrane; Lipid-anchor; Cytoplasmic side. Concentrates at the leading edge of migrating cells. Localizes outside membrane raft regions.
Purification	The antibody was affinity-purified from rabbit antiserum by affinity-chromatography using epitope-specific immunogen.
Clonality	Polyclonal
Concentration	1 mg/ml
Observed band	12kD
Human Gene ID	84299
Human Swiss-Prot Number	Q9BRT3
Alternative Names	
Background	function:May be involved in a redox-related process .,similarity:Belongs to the SelWTH family.,





ELK Biotechnology



Western blot analysis of lysates from Jarkat cells, primary antibody was diluted at 1:1000, 4° over night



+86-27-59760950

ELKbio@ELKbiotech.com

www.elkbiotech.com

23-2, No.388 Gaoxin 2nd Road, Wuhan East Lake Hi-tech Development Zone, Hubei, P.R.C.