



VAMP7 rabbit pAb

Cat No.:ES11944

For research use only

Overview

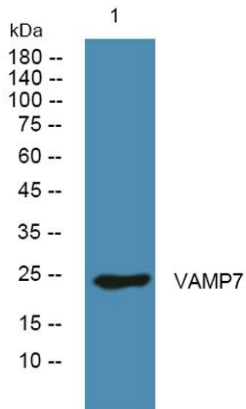
Product Name	VAMP7 rabbit pAb
Host species	Rabbit
Applications	WB;ELISA
Species Cross-Reactivity	Human;Mouse;Rat
Recommended dilutions	WB 1:500-2000 ELISA 1:5000-20000
Immunogen	Synthesized peptide derived from part region of human protein
Specificity	VAMP7 Polyclonal Antibody detects endogenous levels of protein.
Formulation	Liquid in PBS containing 50% glycerol, 0.5% BSA and 0.02% sodium azide.
Storage	Store at -20°C. Avoid repeated freeze-thaw cycles.
Protein Name	Vesicle-associated membrane protein 7 (VAMP-7) (Synaptobrevin-like protein 1) (Tetanus-insensitive VAMP) (Ti-VAMP)
Gene Name	VAMP7 SYBL1
Cellular localization	Cytoplasmic vesicle, secretory vesicle membrane ; Single-pass type IV membrane protein . Golgi apparatus, trans-Golgi network membrane ; Single-pass type IV membrane protein . Late endosome membrane ; Single-pass type IV membrane protein . Lysosome membra
Purification	The antibody was affinity-purified from rabbit antiserum by affinity-chromatography using epitope-specific immunogen.
Clonality	Polyclonal
Concentration	1 mg/ml
Observed band	24kD
Human Gene ID	6845
Human Swiss-Prot Number	P51809
Alternative Names	
Background	This gene encodes a transmembrane protein that is a member of the soluble N-ethylmaleimide-sensitive





ELK Biotechnology

factor attachment protein receptor (SNARE) family. The encoded protein localizes to late endosomes and lysosomes and is involved in the fusion of transport vesicles to their target membranes. Alternate splicing results in multiple transcript variants.[provided by RefSeq, Jun 2010],



Western blot analysis of lysates from U2OS cells, primary antibody was diluted at 1:1000, 4° over night



+86-27-59760950

ELKbio@ELKbiotech.com

www.elkbiotech.com

23-2, No.388 Gaoxin 2nd Road, Wuhan East Lake Hi-tech Development Zone, Hubei, P.R.C