



KLOT rabbit pAb

Cat No.:ES11915

For research use only

Overview

Product Name	KLOT rabbit pAb
Host species	Rabbit
Applications	WB;ELISA
Species Cross-Reactivity	Human;Mouse;Rat
Recommended dilutions	WB 1:500-2000 ELISA 1:5000-20000
Immunogen	Synthesized peptide derived from part region of human protein AA range: 400-500
Specificity	KLOT Polyclonal Antibody detects endogenous levels of protein.
Formulation	Liquid in PBS containing 50% glycerol, 0.5% BSA and 0.02% sodium azide.
Storage	Store at -20°C. Avoid repeated freeze-thaw cycles.
Protein Name	Klotho (EC 3.2.1.31) [Cleaved into: Klotho peptide]
Gene Name	KL
Cellular localization	[Isoform 1]: Cell membrane ; Single-pass type I membrane protein . Apical cell membrane ; Single-pass type I membrane protein . Isoform 1 shedding leads to a soluble peptide. . ; [Isoform 2]: Secreted . ; [Klotho peptide]: Secreted .
Purification	The antibody was affinity-purified from rabbit antiserum by affinity-chromatography using epitope-specific immunogen.
Clonality	Polyclonal
Concentration	1 mg/ml
Observed band	111kD
Human Gene ID	9365
Human Swiss-Prot Number	Q9UEF7
Alternative Names	
Background	This gene encodes a type-I membrane protein that is related to beta-glucosidases. Reduced production of this protein has been observed in patients with chronic renal failure (CRF), and this may be one of the factors underlying the degenerative processes

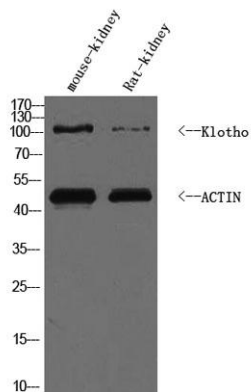




ELK Biotechnology

(e.g., arteriosclerosis, osteoporosis, and skin atrophy) seen in CRF. Also, mutations within this protein have been associated with ageing and bone loss. [provided by RefSeq, Jul 2008],

Western Blot analysis of mouse kidney, rat kidney, HuvEc cell lysis. Primary Antibody was diluted at 1:1000. Secondary antibody(catalog#:RS0002 was diluted at 1:10000



+86-27-59760950

ELKbio@ELKbiotech.com

www.elkbiotech.com

23-2, No.388 Gaoxin 2nd Road,Wuhan East Lake Hi-tech Development Zone, Hubei , P.R.C