



IF5A1 rabbit pAb

Cat No.:ES11898

For research use only

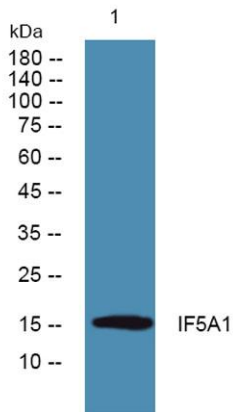
Overview

Product Name	IF5A1 rabbit pAb
Host species	Rabbit
Applications	WB;ELISA
Species Cross-Reactivity	Human;Mouse;Rat
Recommended dilutions	WB 1:500-2000 ELISA 1:5000-20000
Immunogen	Synthesized peptide derived from part region of human protein
Specificity	IF5A1 Polyclonal Antibody detects endogenous levels of protein.
Formulation	Liquid in PBS containing 50% glycerol, 0.5% BSA and 0.02% sodium azide.
Storage	Store at -20°C. Avoid repeated freeze-thaw cycles.
Protein Name	Eukaryotic translation initiation factor 5A-1 (eIF-5A-1) (eIF-5A1) (Eukaryotic initiation factor 5A isoform 1) (eIF-5A) (Rev-binding factor) (eIF-4D)
Gene Name	EIF5A
Cellular localization	Cytoplasm . Nucleus . Endoplasmic reticulum membrane ; Peripheral membrane protein ; Cytoplasmic side . Hypusine modification promotes the nuclear export and cytoplasmic localization and there was a dynamic shift in the localization from predominantly cyt
Purification	The antibody was affinity-purified from rabbit antiserum by affinity-chromatography using epitope-specific immunogen.
Clonality	Polyclonal
Concentration	1 mg/ml
Observed band	16kD
Human Gene ID	1984
Human Swiss-Prot Number	P63241
Alternative Names	
Background	function:The precise role of eIF-5A in protein biosynthesis is not known but it functions by





promoting the formation of the first peptide bond.,PTM:eIF-5A seems to be the only eukaryotic protein to have an hypusine residue which is a post-translational modification of a lysine by the addition of a butylamino group (from spermidine).,similarity:Belongs to the eIF-5A family.,subunit:Found in a complex with Ran and XPO4. The hypusine modification increases the interaction with XPO4.,tissue specificity:Expressed in umbilical vein endothelial cells and several cancer cell lines (at protein level).,



Western blot analysis of lysates from U2OS cells, primary antibody was diluted at 1:1000, 4° over night

