



ELAV1 rabbit pAb

Cat No.:ES11889

For research use only

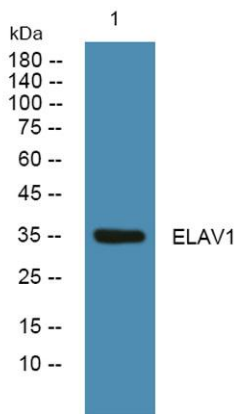
Overview

Product Name	ELAV1 rabbit pAb
Host species	Rabbit
Applications	WB;ELISA
Species Cross-Reactivity	Human;Mouse
Recommended dilutions	WB 1:500-2000 ELISA 1:5000-20000
Immunogen	Synthesized peptide derived from part region of human protein
Specificity	ELAV1 Polyclonal Antibody detects endogenous levels of protein.
Formulation	Liquid in PBS containing 50% glycerol, 0.5% BSA and 0.02% sodium azide.
Storage	Store at -20°C. Avoid repeated freeze-thaw cycles.
Protein Name	ELAV-like protein 1 (Hu-antigen R) (HuR)
Gene Name	ELAVL1 HUR
Cellular localization	Cytoplasm . Nucleus . Cytoplasm, Stress granule . Cytoplasm, P-body . Translocates into the cytoplasm following phosphorylation by MAPKAPK2 (PubMed:14517288). Likewise, phosphorylation by PRKCD promotes translocation from the nucleus into the cytoplasm, w
Purification	The antibody was affinity-purified from rabbit antiserum by affinity-chromatography using epitope-specific immunogen.
Clonality	Polyclonal
Concentration	1 mg/ml
Observed band	35kD
Human Gene ID	1994
Human Swiss-Prot Number	Q15717
Alternative Names	
Background	ELAV like RNA binding protein 1(ELAVL1) Homo sapiens The protein encoded by this gene is a member of the ELAVL family of RNA-binding proteins that contain several RNA recognition





motifs, and selectively bind AU-rich elements (AREs) found in the 3' untranslated regions of mRNAs. AREs signal degradation of mRNAs as a means to regulate gene expression, thus by binding AREs, the ELAVL family of proteins play a role in stabilizing ARE-containing mRNAs. This gene has been implicated in a variety of biological processes and has been linked to a number of diseases, including cancer. It is highly expressed in many cancers, and could be potentially useful in cancer diagnosis, prognosis, and therapy. [provided by RefSeq, Sep 2012],



Western blot analysis of lysates from Jarkat cells, primary antibody was diluted at 1:1000, 4° over night

