



# EIF1 rabbit pAb

Cat No.:ES11879

For research use only

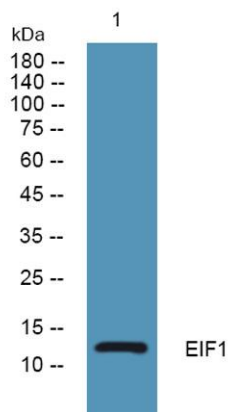
## Overview

<b>Product Name</b>	EIF1 rabbit pAb
<b>Host species</b>	Rabbit
<b>Applications</b>	WB;ELISA
<b>Species Cross-Reactivity</b>	Human;Mouse
<b>Recommended dilutions</b>	WB 1:500-2000 ELISA 1:5000-20000
<b>Immunogen</b>	Synthesized peptide derived from part region of human protein AA range: 1-50
<b>Specificity</b>	EIF1 Polyclonal Antibody detects endogenous levels of protein.
<b>Formulation</b>	Liquid in PBS containing 50% glycerol, 0.5% BSA and 0.02% sodium azide.
<b>Storage</b>	Store at -20°C. Avoid repeated freeze-thaw cycles.
<b>Protein Name</b>	Eukaryotic translation initiation factor 1 (eIF1) (A121) (Protein translation factor SUI1 homolog) (Sui1iso1)
<b>Gene Name</b>	EIF1 SUI1
<b>Cellular localization</b>	nucleus,cytoplasm,
<b>Purification</b>	The antibody was affinity-purified from rabbit antiserum by affinity-chromatography using epitope-specific immunogen.
<b>Clonality</b>	Polyclonal
<b>Concentration</b>	1 mg/ml
<b>Observed band</b>	12kD
<b>Human Gene ID</b>	10209
<b>Human Swiss-Prot Number</b>	P41567
<b>Alternative Names</b>	
<b>Background</b>	function:Necessary for scanning and involved in initiation site selection. Promotes the assembly of 48S ribosomal complexes at the authentic initiation codon of a conventional capped mRNA.,similarity:Belongs to the SUI1 family.,subunit:Interacts with RENT2.,





**ELK Biotechnology**



Western blot analysis of lysates from SW480 cells, primary antibody was diluted at 1:1000, 4° over night



+86-27-59760950

[ELKbio@ELKbiotech.com](mailto:ELKbio@ELKbiotech.com)

[www.elkbiotech.com](http://www.elkbiotech.com)

23-2, No.388 Gaoxin 2nd Road, Wuhan East Lake Hi-tech Development Zone, Hubei, P.R.C.