



# HLAG rabbit pAb

Cat No.:ES11842

For research use only

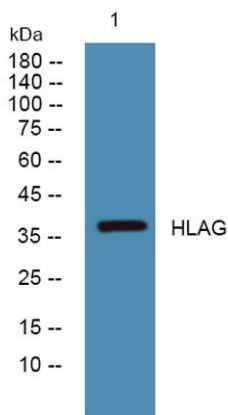
## Overview

<b>Product Name</b>	HLAG rabbit pAb
<b>Host species</b>	Rabbit
<b>Applications</b>	WB;ELISA
<b>Species Cross-Reactivity</b>	Human
<b>Recommended dilutions</b>	WB 1:500-2000 ELISA 1:5000-20000
<b>Immunogen</b>	Synthesized peptide derived from part region of human protein
<b>Specificity</b>	HLAG Polyclonal Antibody detects endogenous levels of protein.
<b>Formulation</b>	Liquid in PBS containing 50% glycerol, 0.5% BSA and 0.02% sodium azide.
<b>Storage</b>	Store at -20°C. Avoid repeated freeze-thaw cycles.
<b>Protein Name</b>	HLA class I histocompatibility antigen, alpha chain G (HLA G antigen) (MHC class I antigen G)
<b>Gene Name</b>	HLA-G HLA-6.0 HLAG
<b>Cellular localization</b>	[Isoform 1]: Cell membrane ; Single-pass type I membrane protein . Endoplasmic reticulum membrane . Early endosome membrane .; [Soluble HLA class I histocompatibility antigen, alpha chain G]: Secreted .; [Isoform 2]: Cell membrane ; Single-pass type I mem
<b>Purification</b>	The antibody was affinity-purified from rabbit antiserum by affinity-chromatography using epitope-specific immunogen.
<b>Clonality</b>	Polyclonal
<b>Concentration</b>	1 mg/ml
<b>Observed band</b>	37kD
<b>Human Gene ID</b>	3135
<b>Human Swiss-Prot Number</b>	P17693
<b>Alternative Names</b>	
<b>Background</b>	HLA-G belongs to the HLA class I heavy chain paralogues. This class I molecule is a heterodimer consisting of a heavy chain and a light chain (beta-2





microglobulin). The heavy chain is anchored in the membrane. HLA-G is expressed on fetal derived placental cells. The heavy chain is approximately 45 kDa and its gene contains 8 exons. Exon one encodes the leader peptide, exons 2 and 3 encode the alpha1 and alpha2 domain, which both bind the peptide, exon 4 encodes the alpha3 domain, exon 5 encodes the transmembrane region, and exon 6 encodes the cytoplasmic tail. [provided by RefSeq, Jul 2008],



Western blot analysis of lysates from A431 cells, primary antibody was diluted at 1:1000, 4° over night

