



GDF1 rabbit pAb

Cat No.:ES11840

For research use only

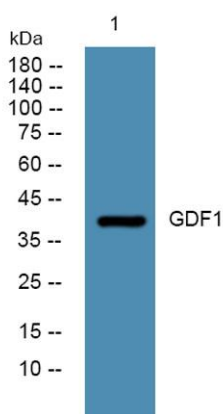
Overview

Product Name	GDF1 rabbit pAb
Host species	Rabbit
Applications	WB;ELISA
Species Cross-Reactivity	Human;Rat;Mouse;
Recommended dilutions	WB 1:500-2000 ELISA 1:5000-20000
Immunogen	Synthesized peptide derived from part region of human protein AA range: 321-370
Specificity	GDF1 Polyclonal Antibody detects endogenous levels of protein.
Formulation	Liquid in PBS containing 50% glycerol, 0.5% BSA and 0.02% sodium azide.
Storage	Store at -20°C. Avoid repeated freeze-thaw cycles.
Protein Name	Embryonic growth/differentiation factor 1 (GDF-1)
Gene Name	GDF1
Cellular localization	Secreted.
Purification	The antibody was affinity-purified from rabbit antiserum by affinity-chromatography using epitope-specific immunogen.
Clonality	Polyclonal
Concentration	1 mg/ml
Observed band	40kD
Human Gene ID	2657
Human Swiss-Prot Number	P27539
Alternative Names	
Background	This gene encodes a secreted ligand of the TGF-beta (transforming growth factor-beta) superfamily of proteins. Ligands of this family bind various TGF-beta receptors leading to recruitment and activation of SMAD family transcription factors that regulate gene expression. The encoded preproprotein is proteolytically processed to generate each subunit of the disulfide-linked homodimer. Studies in rodents suggest that this





protein is involved in the establishment of left-right asymmetry in early embryogenesis and in neural development in later embryogenesis. The encoded protein is translated from a bicistronic mRNA that also encodes ceramide synthase 1. Mutations in this gene are associated with several congenital cardiovascular malformations. [provided by RefSeq, Jul 2016],



Western blot analysis of lysates from SW480 cells, primary antibody was diluted at 1:1000, 4° over night

