



# ANF rabbit pAb

Cat No.:ES11830

For research use only

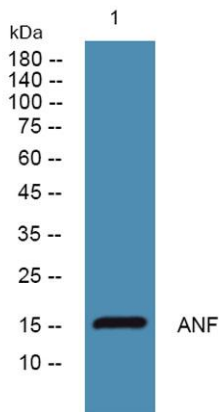
## Overview

|                                 |   |
|---------------------------------|---|
| <b>Product Name</b>             | ANF rabbit pAb  |
| <b>Host species</b>             | Rabbit  |
| <b>Applications</b>             | WB;ELISA  |
| <b>Species Cross-Reactivity</b> | Human;Mouse;Rat   |
| <b>Recommended dilutions</b>    | WB 1:500-2000 ELISA 1:5000-20000  |
| <b>Immunogen</b>                | Synthesized peptide derived from part region of human protein   |
| <b>Specificity</b>              | ANF Polyclonal Antibody detects endogenous levels of protein.   |
| <b>Formulation</b>              | Liquid in PBS containing 50% glycerol, 0.5% BSA and 0.02% sodium azide.   |
| <b>Storage</b>                  | Store at -20°C. Avoid repeated freeze-thaw cycles.  |
| <b>Protein Name</b>             | Natriuretic peptides A (CDD-ANF) (Prepronatriodilatin) [Cleaved into: Cardiodilatin-related peptide (CDP); Atrial natriuretic factor (ANF) (Atrial natriuretic peptide) (ANP)]  |
| <b>Gene Name</b>                | NPPA ANP PND  |
| <b>Cellular localization</b>    | [Long-acting natriuretic peptide]: Secreted . Detected in blood. .; [Vessel dilator]: Secreted . Detected in blood. .; [Kaliuretic peptide]: Secreted . Detected in blood. .; [Urodilatin]: Secreted . Detected in urine (PubMed:2972874, PubMed:9794555, PubMe |
| <b>Purification</b>             | The antibody was affinity-purified from rabbit antiserum by affinity-chromatography using epitope-specific immunogen.   |
| <b>Clonality</b>                | Polyclonal  |
| <b>Concentration</b>            | 1 mg/ml   |
| <b>Observed band</b>            | 16kD  |
| <b>Human Gene ID</b>            | 4878  |
| <b>Human Swiss-Prot Number</b>  | P01160  |
| <b>Alternative Names</b>        |   |
| <b>Background</b>               | The protein encoded by this gene belongs to the   |





natriuretic peptide family. Natriuretic peptides are implicated in the control of extracellular fluid volume and electrolyte homeostasis. This protein is synthesized as a large precursor (containing a signal peptide), which is processed to release a peptide from the N-terminus with similarity to vasoactive peptide, cardiodilatin, and another peptide from the C-terminus with natriuretic-diuretic activity. Mutations in this gene have been associated with atrial fibrillation familial type 6. This gene is located adjacent to another member of the natriuretic family of peptides on chromosome 1. [provided by RefSeq, Oct 2015],



Western blot analysis of lysates from U2OS cells, primary antibody was diluted at 1:1000, 4° over night

